

CABIN

1. DESCRIPTION

This section covers cabin compartment seats, seat harnesses, trim, cabin headliner, floor covering, sunvisors, grab handles, headset hooks, coat hooks, drink holders, storage pockets, and radio module assembly.

This airplane has two individual front crew seats. The seat's forward and aft travel path is adjusted through the seat position control located below the center of the seat cushion. The lower seat cushion is supported by an energy absorption module that reduces impact stroke in the event of a crash. Recline position is controlled through levers located on either side of the seat back. Rotating the lever to the recline position when there is no pressure on the seat back will return the seat back to the full up position.

Serials 0002 thru 1128 before SB 2X-25-07 or SB 2X-25-14: Each front crew seat has a four-point restraint, with a single inertia-reel retractor on the shoulder belt.

Serials 0002 thru 1128 after SB 2X-25-07, 1129 thru 1499, 1501 thru 1519 before SB 2X-25-14: Each front crew seat has a four-point restraint, with a dual inertia-reel retractor on the shoulder belt.

Serials 1500, 1520 & subs and Serials 0795, 0820 thru 1499, 1501 thru 1519 after SB 2X-25-14: Each crew seat has an inflatable, four-point restraint, with a dual inertia-reel retractor on the shoulder belt. An electronic module assembly, mounted below the cabin floor, contains a crash sensor, battery, and related circuitry to monitor the deceleration rate of the airplane. In the event of a crash, the electronic module assembly sends a signal to an inflator assembly mounted to the aft seat frame. The inflator assembly inflates an air bag integral to the shoulder belts that reduces impact trauma to the passenger.

The rear split passenger seat bench has a fixed seat bottom and features backrests that fold forward independently for each side. The lower seat cushion is supported by an energy absorption module that reduces impact stroke in the event of a crash. Seat backs can be folded forward, with detent pins removed, to provide a semi-flat surface for bulky cargo extending forward from the baggage compartment. The detent pins are located at the base of the backrest.

The radio module assembly, mounted to the bolster panel and center console, contains the audio panel, GPS/COM/NAV receivers, transponder, and autopilot. A rear-mounted cooling fan and series of cooling ducts prevent the avionics from overheating.

2. MAINTENANCE PRACTICES

A. Crew Seats (See Figure 25-101)

CAUTION: Avoid kneeling or stepping on seats so as to not crush the energy absorption modules.

(1) Removal - Crew Seats

- (a) *Serials 1500, 1520 & subs and Serials 0795, 0820 thru 1499, 1501 thru 1519 after SB 2X-25-14:* Disconnect inflatable restraint interface cable from inflator cable.
- (b) Remove seat stop bolts and washers from seat rails.
- (c) Lift up on seat latch and slide seat forward off seat tracks.

(2) Disassembly - Crew Seats

- (a) Recline handle
 - 1 At side of crew seat back, loosen set screws securing crew seat recline handle to shaft, and slide handle off shaft. Repeat on opposite side of crew seat.
- (b) Seat back top
 - 1 Disassemble crew seat recline handle. (Refer to 25-10)

CAUTION: Use care to avoid damaging upholstery on recline handle shafts.

- 2 At lower, aft crew seat back, release reclosable fasteners and slide upholstery upward to expose seat back frame.
- 3 Disassemble crew seat harness lap belt attach clip. (Refer to 25-10)
- 4 Remove seat belt straps from upholstery, then slide upholstery upward and off seat back.
- 5 Slide head rest upward and off top of seat back.
- 6 *Serials 0795, 0820 thru 1499, 1501 thru 1519 before SB 2X-25-14, and Serials 0002 thru 0794, 0796 thru 0819:* Remove screws, washers, spacers, fairlead plates, and rub strips securing upholstery angle to seat back top.
- 7 *Serials 1500, 1520 & subs and Serials 0795, 0820 thru 1499, 1501 thru 1519 after SB 2X-25-14:* Remove screws, washers, spacers, fairlead plates, shoulder belt guides, and rub strips securing upholstery angle to seat back top.

(c) Seat adjustment handle

- 1 Remove crew seat. (Refer to 25-10)
- 2 Remove screw, washers, and nut securing handle and seat pins to lower seat frame. Repeat on opposite side of seat frame.
- 3 Remove handle and spring-loaded seat pins from seat frame.

(d) Seat recline locks

- 1 Fold crew seats to break-over positions.
- 2 At lower, aft crew seats, release reclosable fasteners to expose lower seat frame.
- 3 Remove bolts, washers, and nuts securing aft lateral tube and recline locks to lower, aft sides of seat frame.

(3) Assembly - Crew Seats

(a) Recline handle

- 1 At side of crew seat back, position recline handle onto shaft so that handle is pointing in a downward direction, slide reclining handle on shaft, then tighten set screws securing crew seat reclining handle to shaft. Repeat on opposite side of crew seat.

(b) Seat back top

CAUTION: When routing seat belt straps, ensure belts do not become twisted.

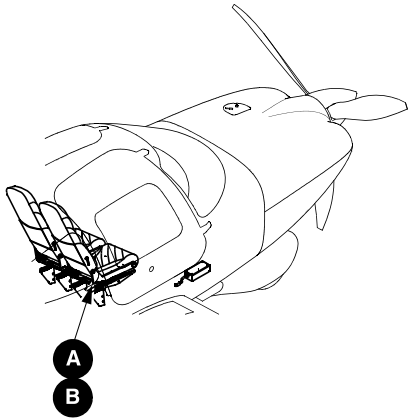
- 1 Route seat belt straps from inertia reel up seat back until straps rest over top of seat back.
 - 2 *Serials 0795, 0820 thru 1499, 1501 thru 1519 before SB 2X-25-14, and Serials 0002 thru 0794, 0796 thru 0819:* Position rub strips between each seat belt strap and top of seat back. Secure upholstery angle to seat back with screws, washers, spacers, fairlead plates, and rub strips.
 - 3 *Serials 1500, 1520 & subs and Serials 0795, 0820 thru 1499, 1501 thru 1519 after SB 2X-25-14:* Position rub strips and shoulder belt guides between each seat belt strap and top of seat back. Secure upholstery angle to seat back with screws, washers, spacers, fairlead plates, shoulder belt guides, and rub strips.
 - 4 Install head rest on top of seat back.
 - 5 Slide seat back upholstery over the seat back far enough to pass the seat belt straps through the pass-through hole in the upholstery.
 - 6 Assemble crew seat lap belt attach clip. (Refer to 25-10)
 - 7 Place seat back upholstery into position and press firmly on reclosable fasteners to secure upholstery to seat back.
 - 8 Assemble crew seat recline handle. (Refer to 25-10)
- (c) Seat adjustment handle
- 1 At bottom of seat, install spring-loaded seat pins into seat frame pin holes.
 - 2 Position handle to attachment points on seat frame.
 - 3 Install screw, washers, and nut securing seat pin and handle to lower seat frame. Repeat on opposite side of seat frame.
 - 4 Install crew seat. (Refer to 25-10)
- (d) Seat recline locks
- 1 Position aft lateral tube and recline locks to seat frame and install bolts, washers, and nuts securing recline locks to seat frame. Torque to 30 - 40 in-lb (3.3 - 4.5 Nm).
 - 2 Place seat back upholstery into position and press firmly on reclosable fasteners to secure upholstery to seat back.
- (4) Installation - Crew Seats

CAUTION: *Serials 1500, 1520 & subs and Serials 0795, 0820 thru 1499, 1501 thru 1519 after SB 2X-25-14:* Interface and inflator cable connections requires that LH and RH crew seats are installed at their designated locations.

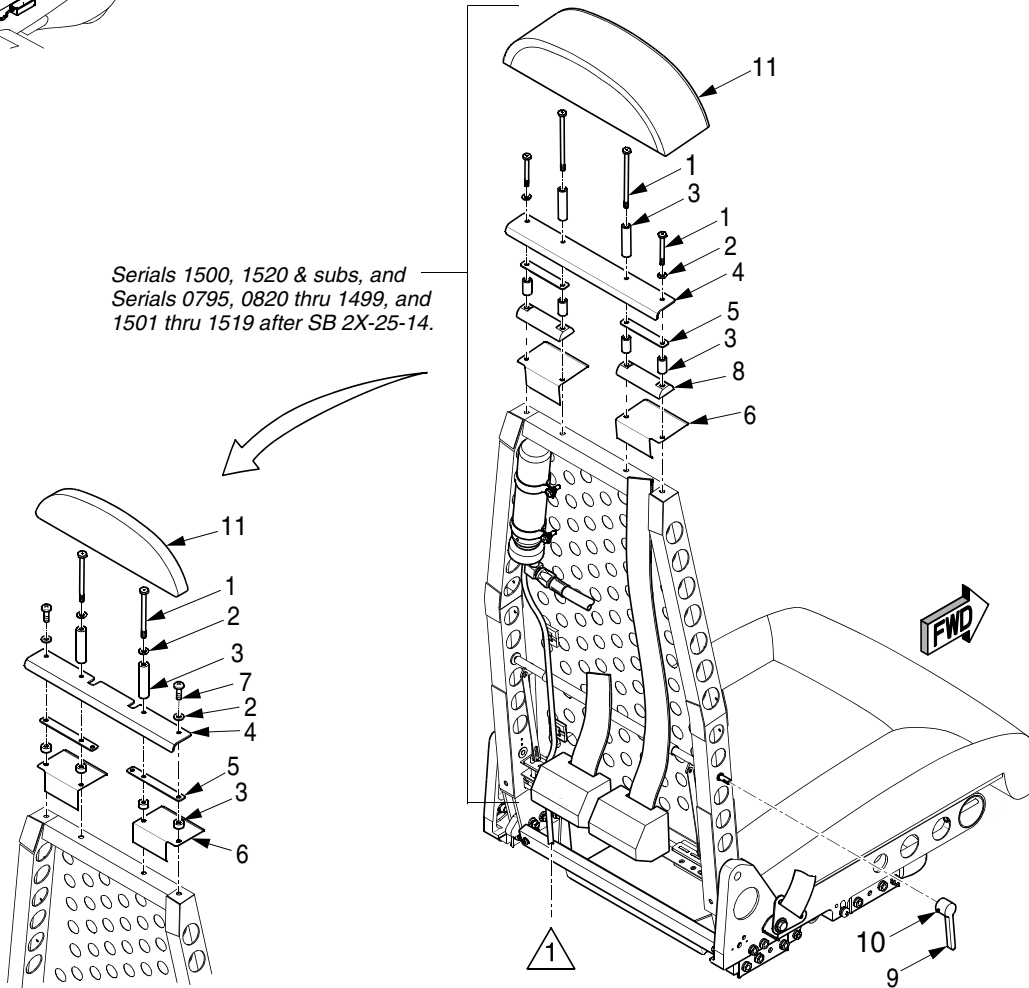
- (a) Position seat channel onto forward edge of seat tracks.
- (b) Lift up on seat latch and slide seat aft onto tracks. Slide seat back to the neutral position.

CAUTION: Ensure seat stop screw is installed on LH track of pilot's and co-pilot's seat track.

- (c) Torque each seat stop screw assembly to 25.0 in-lb (2.8 Nm).
- (d) *Serials 1500, 1520 & subs and Serials 0795, 0820 thru 1499, 1501 thru 1519 after SB 2X-25-14:* Connect inflatable restraint interface cable to inflator cable.
- (e) Perform Inspection/Check - Crew Seats. (Refer to 25-10)
- (f) Perform Adjustment/Test - Crew Seat Harness. (Refer to 25-10)



Serials 1500, 1520 & subs, and
Serials 0795, 0820 thru 1499, and
1501 thru 1519 after SB 2X-25-14.



Serials 0002 thru 0794, 0796 thru 0819
and Serials 0795, 0820 thru 1499, and 1501
thru 1519 before SB 2X-25-14.

- LEGEND**
- 1. Bolt
 - 2. Washer
 - 3. Spacer
 - 4. Upholstery Angle
 - 5. Fairlead Plate
 - 6. Rub Strip
 - 7. Screw
 - 8. Shoulder Belt Guide
 - 9. Recline Handle
 - 10. Set Screw
 - 11. Head Rest Assembly

NOTE

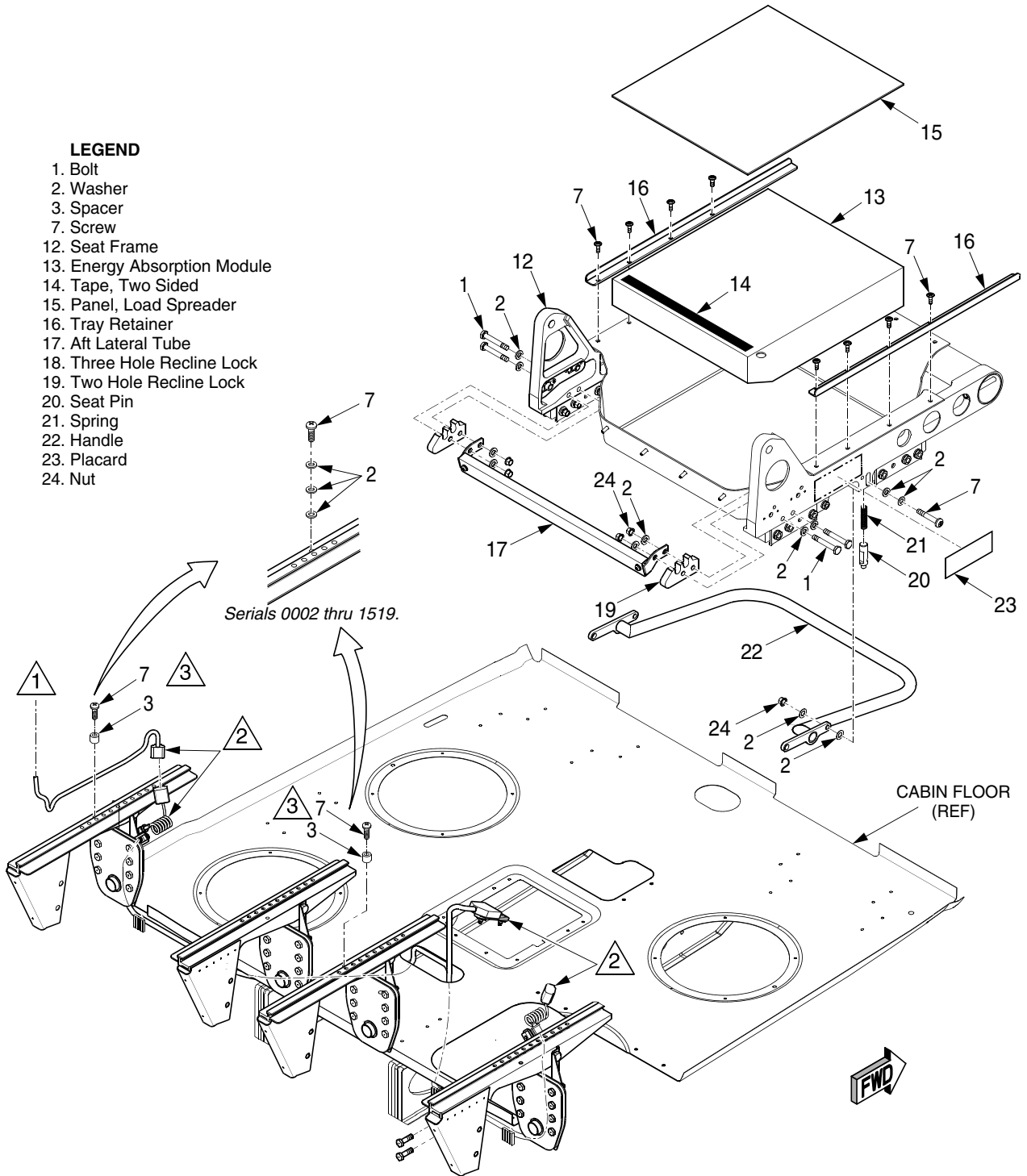
1 Refer to sheet 2 of 2 for continuation.

DETAIL A

SR22_MM25_2139B

**Figure 25-101
Crew Seat Installation (Sheet 1 of 2)**

EFFECTIVITY:
All



LEGEND

- 1. Bolt
- 2. Washer
- 3. Spacer
- 7. Screw
- 12. Seat Frame
- 13. Energy Absorption Module
- 14. Tape, Two Sided
- 15. Panel, Load Spreader
- 16. Tray Retainer
- 17. Aft Lateral Tube
- 18. Three Hole Recline Lock
- 19. Two Hole Recline Lock
- 20. Seat Pin
- 21. Spring
- 22. Handle
- 23. Placard
- 24. Nut

Serials 0002 thru 1519.

CABIN FLOOR (REF)



NOTE

- 1 Refer to sheet 1 of 2 for continuation.
- 2 Serials 0795, 0820 thru 1499, 1501 thru 1519 after SB 2X-25-14 and Serials 1500, 1520 & subs: Part of inflatable harness assembly.
- 3 Ensure seat stop screw is installed on LH track of pilot's and co-pilot's seat track.

DETAIL B

SR22_MM25_2250B

**Figure 25-101
Crew Seat Installation (Sheet 2 of 2)**

EFFECTIVITY:
All

(5) Inspection/Check - Crew Seats

- (a) Verify security of attach brackets and seat stop screw.

CAUTION: If seat is misaligned and cannot be corrected by Adjustment/Test - Crew Seat Longitudinal Alignment, contact Cirrus Design for disposition.

- (b) Verify seat forward/aft position adjustment catches both seat pins in all locking positions. To determine if both seat pins are engaged, skew seat forward-and-aft, and note whether second seat pin engages **after** the first seat pin.

- 1 If seat position adjusts smoothly and seat pins engage simultaneously, seat track is aligned with seat.
- 2 If seat position is difficult to adjust and/or seat pins require that seat is skewed before seat pins are aligned with seat track holes, perform Adjustment/Test - Crew Seat Longitudinal Alignment. (Refer to 25-10)

- (c) Verify seat recline lock functions in all recline positions.
- (d) Visually inspect harness webbing for cut or worn edges, damaged stitching, broken fabric threads, tears, excessive chafe marks, excessive wear, and excessive fraying.

Note: A limited amount of “frayed” webbing will retain sufficient strength necessary to meet the strength requirements of the webbing. Frayed webbing is defined as broken filaments from either the longitudinal or transverse yarns.

- 1 Verify that broken or fraying webbing filaments are not numerous enough to obscure the identity of any yarn when viewed from a distance of about 8.0 inches (20.3 cm).
- 2 Verify amount of fray comprises less than 10% of webbing width and does not exceed 8 inches (20.3 cm) in length.
- 3 Ensure edge of webbing is free from cuts or tears.
- 4 At non-edge locations, verify number of broken yarns does not exceed 15.
- 5 Ensure number of torn stitches in a stitch pattern does not exceed 15.
- 6 Verify frayed or distorted webbing does not interfere with proper operation of the restraint system.

- (e) Inspect break-over pin alignment.

- 1 Acquire necessary tools, equipment, and supplies.

Description	P/N or Spec.	Supplier	Purpose
Vernier Caliper	-	Any Source	Measure

- 2 Fold crew seats to break-over positions.
- 3 At lower, aft crew seats, release reclosable fasteners to expose lower seat frame.
- 4 Using caliper, verify clearance between center of break-over pin and seat back frame at bottom of upper break-over guide is equal to 0.580 ±0.023 inch (1.473 ±0.058 cm). (See Figure 25-103)
- 5 Verify clearance between center of break-over pin and seat back frame at tangent of lower break-over pin is equal to 0.580 ±0.023 inch (1.473 ±0.058 cm).
- 6 If measurement *is not equal* to that specified, perform Adjustment/Test - Break-Over Pin Alignment. (Refer to 25-10)
- 7 Repeat break-over pin alignment inspection for opposite seat.

(6) Adjustment/Test - Crew Seat Longitudinal Alignment (See Figure 25-102)

- (a) Acquire necessary tools, equipment, and supplies.

Description	P/N or Spec.	Supplier	Purpose
Seat Track Longitudinal Alignment Tool	15936-001	Cirrus Design	Measure
Caliper	-	Any Source	Measure
Lithium Marine Grease	50665-001	Cirrus Design	Lubricate
Permanent Marker	-	Any Source	Mark

- (b) Remove crew seat. (Refer to 25-10)
- (c) Verify seat track longitudinal alignment tool slots are free of debris, pins are secure, sliding pin moves freely forward and aft, and calibration label is identified.
- (d) Align seat track longitudinal alignment tool to seat tracks with sliding mechanism positioned at the upper RH corner.
- (e) Install slots of tool onto seat tracks. Press sliding and stationary pins on tool into corresponding seat track holes.

Note: There is about 0.5 inch (1.27 cm) of movement forward to aft when the tool is properly seated on the seat tracks.

- (f) Move RH side of tool forward and aft to ensure proper movement of the tool.

CAUTION: Using 7.0 to 10.0 lbs (3.2 to 4.5 kg) of force, push tool until binding occurs between the tool and seat tracks. Excessive force will produce inaccurate measurements.

- (g) Push RH side of tool aft to furthestmost orientation.
- (h) Measure distance between top edge of the tool and top edge of the sliding pin with a caliper. Record measurement as the *aft value*.

CAUTION: Using 7.0 to 10.0 lbs (3.2 to 4.5 kg) of force, push tool until binding occurs between the tool and seat tracks. Excessive force will produce inaccurate measurements.

- (i) Push RH side of tool forward to furthestmost orientation.
- (j) Measure distance between top edge of the tool and top edge of the sliding pin with a caliper and record measurement as the *forward value*. Remove tool from seat tracks.
- (k) Determine if *forward value* is within acceptable tolerance.

For example: If *aft value* is 0.2 inch (0.508 cm) and *forward value* is -0.245 inch (0.622 cm), use the following formula:

$$\text{Acceptable Forward Value Range} = - (\text{Aft Value}) \pm 0.025$$

$$\text{Acceptable Forward Value Range} = - (0.2) \pm 0.025 = -0.2 \pm 0.025$$

- (l) If forward value is within acceptable tolerance, offset pins are not required:
 - 1 Install crew seat. (Refer to 25-10)
- (m) If forward value is **not** within acceptable tolerance, offset pins are required.

EFFECTIVITY:
All

- 1 Determine offset required to correct mismatch.

Mismatch Range (in inches)	Greater Than Maximum		Less Than Minimum	
	LH Side	RH Side	RH Side	LH Side
0.011 to 0.030	-	Red (+0.020)	Black (-0.020)	-
0.031 to 0.050	-	Orange (+0.040)	White (-0.040)	-
0.051 to 0.070	-	Yellow (+0.060)	Purple (-0.060)	-
0.071 to 0.090	-	Green (+0.080)	Blue (-0.080)	-
0.091 to 0.110	Black (-0.020)	Green (+0.080)	Blue (-0.080)	Red (0.020)
0.111 to 0.130	White (-0.040)	Green (+0.080)	Blue (-0.080)	Orange (0.040)
0.131 to 0.150	Purple (-0.060)	Green (+0.080)	Blue (-0.080)	Yellow (0.060)
0.151 to 0.160 ¹	Blue (-0.080)	Green (+0.080)	Blue (-0.080)	Green (0.080)

¹ Maximum of 0.160 inch (4.06 mm) mismatch may be accommodated, if mismatch is greater than 0.160 inch (4.06 mm), contact Cirrus Design for disposition.

For example, if *aft value* is 0.2 inch (0.508 cm) and *forward value* is -0.245 inch (0.622 cm), the *forward value* is out of tolerance below the minimum acceptable value of -0.225 inch (-0.572 cm). To correct this mismatch, use the following formula:

$$\text{Mismatch} = (\text{Measured Aft Value} + \text{Measured Forward Value}) / 2$$

$$\text{Mismatch} = (0.2 + (-0.245)) / 2 = -0.023$$

Note: Mismatch is corrected by replacing aft pin with offset pin where sum of offset and mismatch is closest to the nominal value of zero.

- 2 Order placard and the appropriate offset pin to correct mismatch.

Description	P/N or Spec.	Supplier	Purpose
Placard	(Refer to IPC 11-30-01)	Cirrus Design	Label
Seat Pin, Red (0.020 inch)	(Refer to IPC 25-10-01)	Cirrus Design	Offset Pin
Seat Pin, Black (-0.020 inch)			
Seat Pin, Orange (0.040 inch)			
Seat Pin, White (-0.040 inch)			
Seat Pin, Yellow (0.060 inch)			
Seat Pin, Purple (-0.060 inch)			
Seat Pin, Green (0.080 inch)			
Seat Pin, Blue (-0.080 inch)			

For example, if mismatch is -0.023 inch (-0.058 cm), use pin required to offset as close to zero as possible.

Offset = - (Mismatch)

Offset = - (-0.023) = 0.023

A pin with offset of 0.020 inch (Red) will bring longitudinal mismatch within tolerance.

Note: It may be necessary to use opposite displacement seat pins on each side of seat to compensate for misalignment.

For example, if mismatch is -0.091 inch (-0.231 cm), use combination of pins required to offset as close to zero as possible.

Offset = - (Mismatch)

Offset = - (-0.091) = 0.091

A pin with offset of 0.080 inch (Green) installed at RH side and a pin with offset of 0.020 inch (Black) installed at LH side will bring longitudinal mismatch within tolerance.

3 Disassemble crew seat adjustment handle. (Refer to 25-10)

Note: Mismatch measured using the Seat Track Longitudinal Alignment Tool is only nominal track alignment. Other factors such as seat shape may also influence pin engagement function. Any selection of offset pins may be used such that best engagement function is achieved.

4 Replace the existing pin(s) with the offset pin(s). Discard the existing pin(s).

5 Assemble crew seat adjustment handle. (Refer to 25-10)

6 Lubricate seat pins with lithium marine grease.

7 Verify screws are loose enough to permit smooth, unrestricted forward and aft travel of seat.

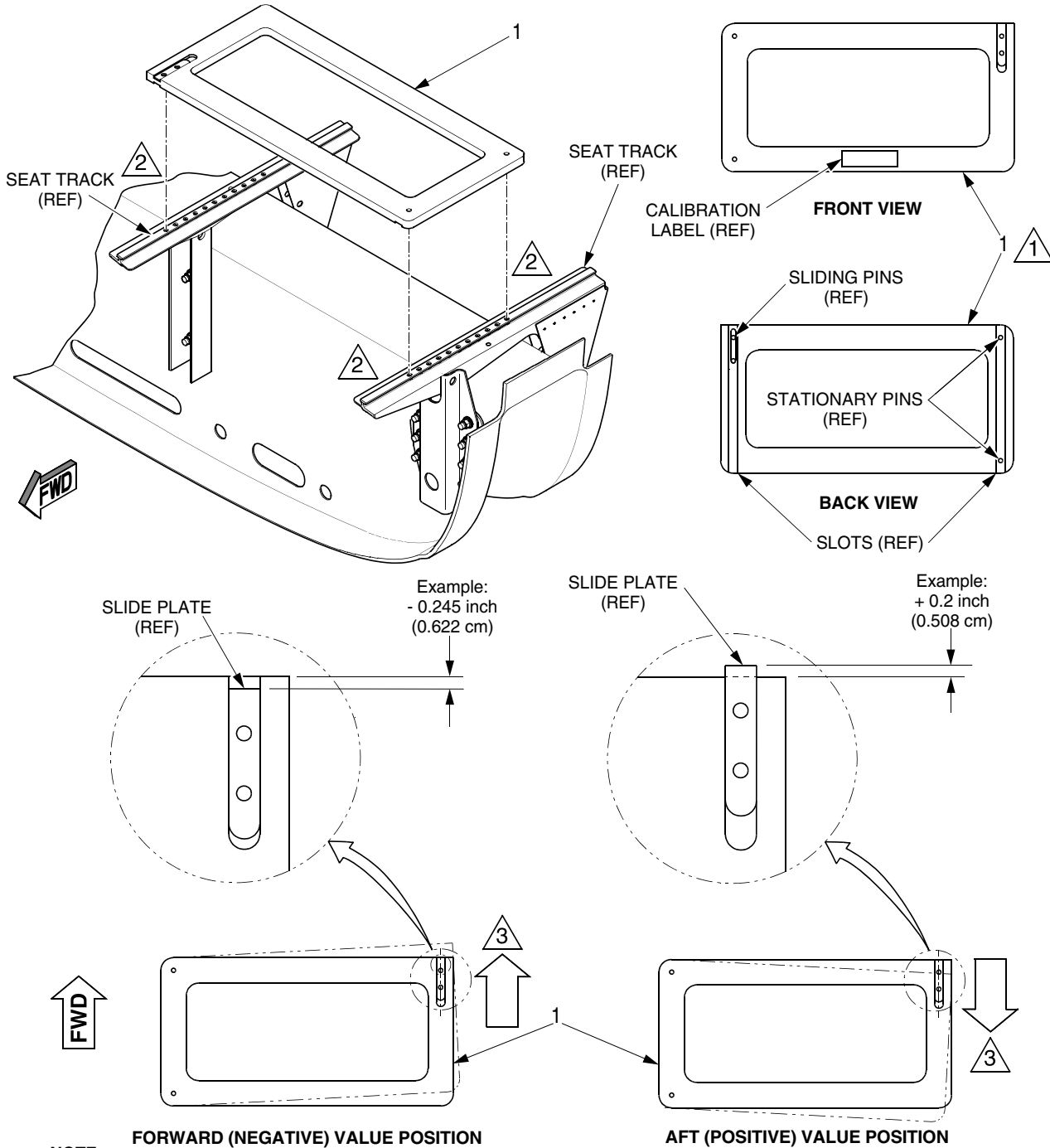
CAUTION: Once seat is modified using offset seat pins, it may only be installed in seat location affected by longitudinal mismatch.

8 Install crew seat. (Refer to 25-10)

9 Verify seat forward and aft position adjusts to all locking positions with relative ease.

10 Using marker on placard, indicate pins utilized, location of each pin, and seat location (pilot or co-pilot).

11 Attach placard to visible location on lower seat frame.



NOTE

- 1 Verify seat track longitudinal alignment tool slots are free of debris, pins are secure, sliding pin moves freely forward and aft, and calibration label is identified.
- 2 Install slots of tool onto the seat tracks. Press sliding and stationary pins into corresponding seat track holes.
- 3 Using 7.0 to 10.0 lbs (3.2 to 4.5 kg) of force, push tool until binding occurs between the tool and seat tracks. Excessive force will produce inaccurate measurements.

LEGEND
 1. Seat Track Longitudinal Alignment Tool

SR22_MM25_2248

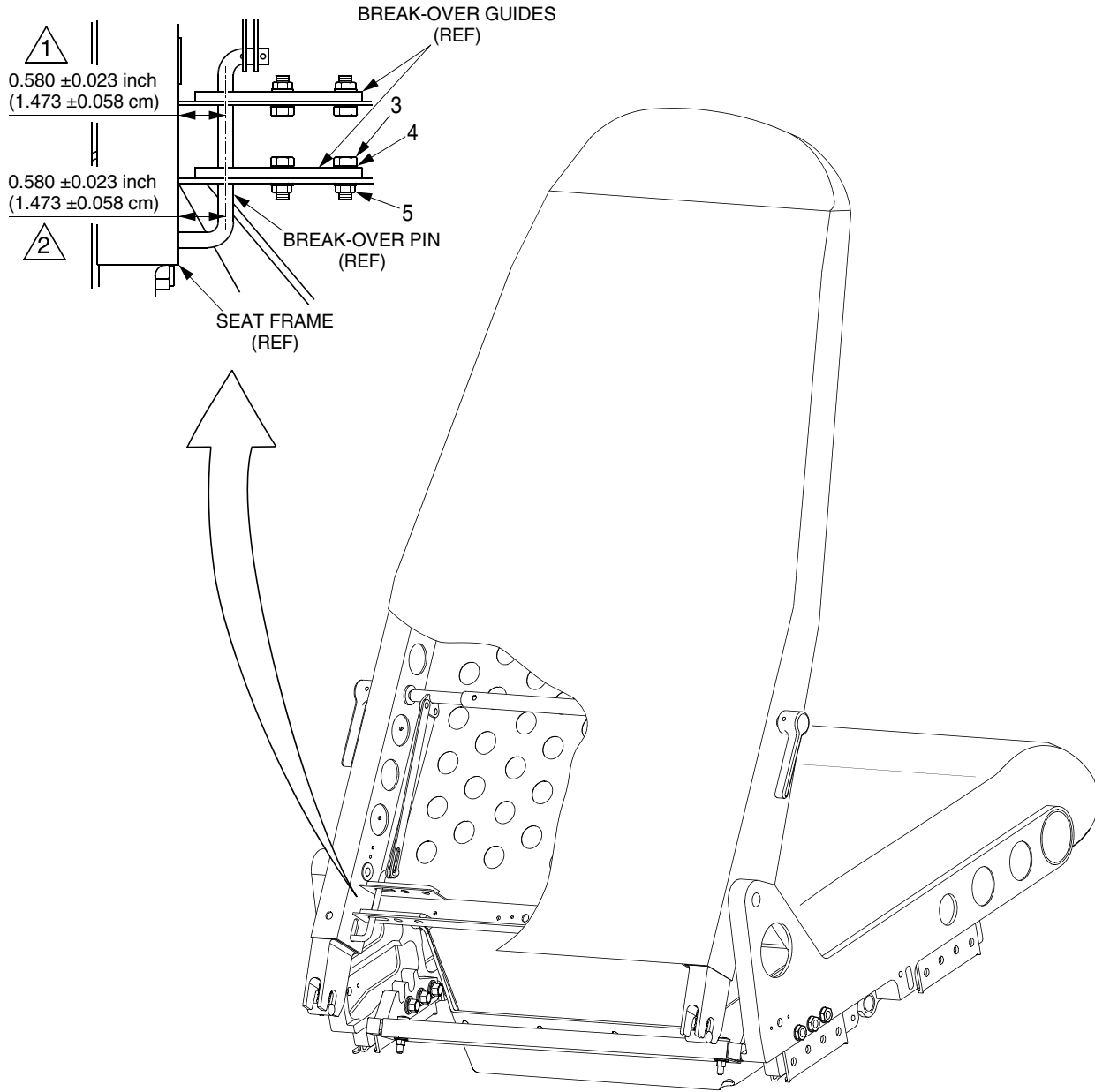
Figure 25-102
Seat Track Longitudinal Adjustment

- (7) Adjustment/Test - Break-Over Pin Alignment (See Figure 25-103)
 - (a) Acquire necessary tools, equipment, and supplies.

Description	P/N or Spec.	Supplier	Purpose
Caliper	-	Any Source	Measure

- (b) Free break-over pin by slightly loosening four sets of attaching hardware securing break-over guides to seat frame.
 - (c) Press break-over pin and guides inboard or outboard as required until break-over pin is positioned within tolerance.
 - (d) Using a caliper, verify clearance between center of break-over pin and seat back frame at bottom of upper break-over guide is equal to 0.580 ± 0.023 inch (1.473 ± 0.058 cm).
 - (e) Verify clearance between center of break-over pin and seat back frame at tangent of lower break-over pin is equal to 0.580 ± 0.023 inch (1.473 ± 0.058 cm).
 - (f) Tighten four sets of attaching hardware securing break-over guides to seat frame.
- (8) Cleaning - Crew Seats
 Periodically vacuum and clean crew seats with approved cleaning solutions to ensure surface dirt and dust removal. (Refer to 12-20)

EFFECTIVITY:
All



NOTE

- ① Measure distance between center of break-over pin and seat frame at bottom of upper break-over guide.
- ② Measure distance between center of break-over pin and seat frame at tangent of lower break-over pin.

LEGEND

- 1. Bolt
- 2. Washer
- 3. Nut

SR22_MM25_2254

Figure 25-103
Break-Over Pin Alignment

EFFECTIVITY:
All

B. Crew Seat Harness (See Figure 25-104)

- (1) Removal - Crew Seat Harness
 - (a) Remove crew seat. (Refer to 25-10)
 - (b) Disassemble crew seat back top. (Refer to 25-10)
 - (c) *Serials 1500, 1520 & subs and Serials 0795, 0820 thru 1499, 1501 thru 1519 after SB 2X-25-14:* Disconnect harness inflator hose from inflator assembly.
 - (d) *Serials 0002 thru 1128 before SB 2X-25-07:* Remove inertia reel cover from inertia reel.
 - (e) *Serials 0002 thru 1128 before SB 2X-25-07:* Remove bolts and washers securing single inertia reel to crossover bar on back of crew seat.
 - (f) *Serials 0002 thru 1128 after SB 2X-25-07:* Remove bolts, washers, and nuts securing dual inertia reel to crossover bar on back of crew seat.
 - (g) *Serials 1129 & subs:* Remove bolts and washers securing dual inertia reel to crossover bar on back of crew seat.
- (2) Disassembly - Crew Seat Harness Lap Belt Attach Clip
 - (a) Disassemble crew seat recline handle. (Refer to 25-10)

CAUTION: Use care to avoid damaging upholstery on recline handle shafts.
 - (b) At lower, aft crew seat back, release reclosable fasteners and slide upholstery upward to expose seat back frame.
 - (c) *Serials 0002 thru 1044 before SB 2X-25-09:* Remove bolt, washers, and spacer securing lap belt attach clip to side of lower crew seat frame. Repeat on opposite side of crew seat.
 - (d) *Serials 0002 thru 1044 after SB 2X-25-09, 1045 & subs:* Remove bolt, washer, spacer, and anti-rotation tab securing lap belt attach clip to side of lower crew seat frame. Repeat on opposite side of crew seat.
- (3) Assembly - Crew Seat Harness Lap Belt Attach Clip
 - (a) *Serials 0002 thru 1044 before SB 2X-25-09:* At forward lap belt installation hole, secure lap belt attach clip to lower seat assembly with spacer, washers, and bolt. Torque bolt to 55 in-lb (6.2 Nm). Verify lap belt attach clip rotates freely. Repeat on opposite side of seat.
 - (b) *Serials 0002 thru 1044 after SB 2X-25-09, 1045 & subs:* At forward lap belt installation hole, secure lap belt attach clip to lower seat assembly with anti-rotation tab, spacer, washer, and bolt. Torque bolt to 55 in-lb (6.2 Nm). Verify lap belt attach clip rotates freely from stop to stop. Repeat on opposite side of crew seat.
 - (c) Place seat back upholstery into position and press firmly on reclosable fasteners to secure upholstery to seat back.
 - (d) Assemble crew seat recline handle. (Refer to 25-10)
- (4) Installation - Crew Seat Harness
 - (a) *Serials 0002 thru 1128 before SB 2X-25-07:* Position single inertia reel to crossover bar with reel positioned upward and secure to seat back with bolts and washers.
 - (b) *Serials 0002 thru 1128 after SB 2X-25-07:* Position dual inertia reel to crossover bar with reels positioned upward and secure to seat back with bolts, washers, and nuts.
 - (c) *Serials 1129 & subs:* Position dual inertia reel to crossover bar with reels positioned upward and secure to seat back with bolts and washers.
 - (d) *Serials 0002 thru 1128 before SB 2X-25-07:* Press inertia reel cover to inertia reel.

- (e) *Serials 1500, 1520 & subs and Serials 0795, 0820 thru 1499, 1501 thru 1519 after SB 2X-25-14:* Connect inflator hose to inflator assembly.

1 Acquire necessary tools, equipment, and supplies.

Description	P/N or Spec.	Supplier	Purpose
Loctite®	242	Any Source	Inflator hose installation.

2 Route inflator hose from seat belt assembly between seat belt webbing and seat back web, ensuring twists and bends are minimized.

3 Apply Loctite® to threads of harness inflator hose fitting.

4 Connect harness inflator hose to inflator assembly. Torque hose fitting to 110 - 130 in-lb (12.4 - 14.7 Nm).

(f) Assemble crew seat back top. (Refer to 25-10)

(g) Install crew seat. (Refer to 25-10)

(h) Perform Adjustment/Test - Crew Seat Harness. (Refer to 25-10)

- (5) Inspection/Check - Crew Seat Harness - *Serials 1500, 1520 & subs, 0795, 0820 - 1499, & 1501 - 1519 after SB 2X-25-14*

(a) *Serials 0795, 0820 thru 1601, 1603 thru 1820, 1822 thru 1839, 1841 thru 1862:* Remove RH crew seat. (Refer to 25-10)

(b) *Serials 1602, 1821, 1840, 1863 & subs:* Remove LH crew seat. (Refer to 25-10)

(c) *Serials 0795, 0820 thru 1601, 1603 thru 1820, 1822 thru 1839, 1841 thru 1862:* Remove cabin floor access panel CF2R. (Refer to 06-00)

(d) *Serials 1602, 1821, 1840, 1863 & subs:* Remove cabin floor access panel CF2L. (Refer to 06-00)

(e) Verify security of electronic module assembly mounting hardware.

(f) Verify security of connection between electronic module assembly and cable interface assembly.

(g) Disassemble crew seat recline handle. (Refer to 25-10)

CAUTION: Use care to avoid damaging upholstery on recline handle shafts.

(h) At lower, aft crew seat back, release reclosable fasteners and slide upholstery upward to expose seat back frame.

(i) Verify security of inflator assembly mounting hardware.

(j) Verify security of connection between harness inflator hose and inflator assembly. Torque hose fitting to 110 - 130 in-lb (12.4 - 14.7 Nm).

(k) Verify security of connection between inflator cable assembly and inflator assembly.

(l) Visually inspect exposed hoses and cables for tears, fraying, and excessive wear.

(m) *Serials 0795, 0820 thru 1601, 1603 thru 1820, 1822 thru 1839, 1841 thru 1862:* Install cabin floor access panel CF2R. (Refer to 06-00)

(n) *Serials 1602, 1821, 1840, 1863 & subs:* Install cabin floor access panel CF2L. (Refer to 06-00)

(o) Place seat back upholstery into position and press firmly on reclosable fasteners to secure upholstery to seat back.

(p) Assemble crew seat recline handle. (Refer to 25-10)

(q) *Serials 0795, 0820 thru 1601, 1603 thru 1820, 1822 thru 1839, 1841 thru 1862:* Install RH crew seat. (Refer to 25-10)

(r) *Serials 1602, 1821, 1840, 1863 & subs:* Install LH crew seat. (Refer to 25-10)

(s) Perform Adjustment/Test - Crew Seat Harness. (Refer to 25-10)

- (6) Adjustment/Test - Crew Seat Harness - *Serials 1500, 1520 & subs, & 0795, 0820 - 1499, 1501 - 1519 after SB 2X-25-14*

The system diagnostic tool (SDT) is a electronic, hand-held testing device used to verify inflatable restraint system functionality and facilitate component troubleshooting. The SDT connects directly to the diagnostic connector on the inflatable restraint cable interface assembly. LEDs for battery, sensor, and inflator indicate green for pass and red for fail. A three-position switch enables testing of multiple seats.

WARNING: Electronic module assembly must be securely installed in airplane prior to testing or inadvertent system deployment may occur.

- (a) Acquire necessary tools, equipment, and supplies.

Description	P/N or Spec.	Supplier	Purpose
System Diagnostic Tool	508987-401	AmSafe Aviation Phoenix, Arizona 85043 800-228-1567	Test inflatable restraint system.

- (b) Set SDT power switch to ON position.
- (c) Verify SDT battery indicator illuminates green. If SDT battery indicator illuminates red, replace SDT battery.
- (d) Set SDT toggle switch to number of seats connected to electronic module assembly.
- (e) Remove right mid console trim. ([Refer to 25-10](#))
- (f) Disconnect diagnostic connector from center console by sliding plug off rail from connector plug.

CAUTION: Disconnect SDT from diagnostic connector once test is completed. If SDT remains connected to diagnostic connector for an extended period of time, power is drained from electronic module assembly.

- (g) Connect SDT connector to diagnostic connector on interface cable.
- (h) Verify LEDs on SDT indicate green.
- (i) If one or more of the LEDs indicate red, perform the following steps:
 - 1 Check all cable assembly connectors and retest.
 - 2 If battery and/or sensor LED indicates red, replace the electronic module assembly and retest. ([Refer to 25-10](#))
 - 3 If inflator LED indicates red, replace the inflator cable assembly and retest. ([Refer to 25-10](#))
 - 4 If inflator LED still indicates red, replace the inflator assembly and retest. ([Refer to 25-10](#))
 - 5 If any fail condition exists after replacing electronic module assembly, inflator cable, and inflator assembly, replace the interface cable and retest. ([Refer to 25-10](#))
- (j) Set SDT power switch to OFF position.
- (k) Disconnect SDT connector from diagnostic connector on interface cable.
- (l) Install diagnostic connector to RH center console flange by sliding plug forward onto rail until connector locks into place with connector plug.
- (m) Install right mid console trim. ([Refer to 25-10](#))

EFFECTIVITY:
All

C. Inflator Assembly - Serials 1500, 1520 & subs, 0795, 0820 - 1499, 1501 - 1519 after SB 2X-25-14 (See Figure 25-104)

WARNING: The inflator assembly is a stored, gas/energetic material device. Severe personal injury or bodily harm may be caused by misuse and/or tampering. Do not tamper with or mishandle the product in any way. Never attempt to open the inflator to service the inflator system. Never apply electrical current to the electronics connection.

- (1) Removal - Inflator Assembly
 - (a) Remove crew seat. (Refer to 25-10)
 - (b) Disassemble crew seat recline handle. (Refer to 25-10)

CAUTION: Use care to avoid damaging upholstery on recline handle shafts.

- (c) At lower, aft crew seat back, release reclosable fasteners and slide upholstery upward to expose seat back frame.
- (d) Disconnect inflator cable assembly from inflator assembly.
- (e) Disconnect harness inflator hose from inflator assembly.
- (f) Loosen bolts, washers, spacers, and nuts securing inflator assembly clamps.
- (g) Remove inflator assembly from seat back.
- (2) Installation - Inflator Assembly
 - (a) Acquire necessary tools, equipment, and supplies.

Description	P/N or Spec.	Supplier	Purpose
Loctite®	242	Any Source	Inflator hose installation.

- (b) Position inflator assembly into clamps and secure to seat with bolts, washers, spacers, and nuts.
- (c) Apply Loctite® to threads of harness inflator hose fitting.
- (d) Connect harness inflator hose to inflator assembly. Torque hose fitting to 110 - 130 in-lb (12.4 - 14.7 Nm).
- (e) Connect inflator cable assembly to inflator assembly.
- (f) Place seat back upholstery into position and press firmly on reclosable fasteners to secure upholstery to seat back.
- (g) Assemble crew seat recline handle. (Refer to 25-10)
- (h) Install crew seat. (Refer to 25-10)
- (i) Perform Adjustment/Test - Crew Seat Harness. (Refer to 25-10)

D. Electronic Module Assy - Serials 1500, 1520 & subs, 0795, 0820 - 1499, 1501 - 1519 after SB 2X-25-14 (See Figure 25-104)

WARNING: Avoid magnetic fields near the electronic module assembly as inadvertent system deployment may occur.

Secure electronic module assembly to fuselage floor before connecting wire harness. An unsecured, electrically connected electronic module assembly may result in inadvertent system deployment.

Do not drop the electronic module assembly as damage to the electronics, battery, or sensor may occur.

- (1) Removal - Electronic Module Assembly
 - (a) *Serials 0795, 0820 thru 1601, 1603 thru 1820, 1822 thru 1839, 1841 thru 1862:* Remove RH crew seat. (Refer to 25-10)
 - (b) *Serials 1602, 1821, 1840, 1863 & subs:* Remove LH crew seat. (Refer to 25-10)
 - (c) *Serials 0795, 0820 thru 1601, 1603 thru 1820, 1822 thru 1839, 1841 thru 1862:* Remove cabin floor access panel CF2R. (Refer to 06-00)
 - (d) *Serials 1602, 1821, 1840, 1863 & subs:* Remove cabin floor access panel CF2L. (Refer to 06-00)
 - (e) Disconnect cable interface assembly from electronic module assembly.
 - (f) Remove screws and nut plates securing electronic module assembly to fuselage floor.
 - (g) Remove electronic module assembly from airplane.
- (2) Installation - Electronic Module Assembly
 - (a) Position electronic module assembly to fuselage floor with directional arrow facing forward and secure with screws and nut plates.
 - (b) Torque screws to 6.0 ±2.0 in-lb (0.68 ±0.23 Nm). Torque stripe not required.
 - (c) Connect interface cable to electronic module assembly.
 - (d) *Serials 0795, 0820 thru 1601, 1603 thru 1820, 1822 thru 1839, 1841 thru 1862:* Install cabin floor access panel CF2R. (Refer to 06-00)
 - (e) *Serials 1602, 1821, 1840, 1863 & subs:* Install cabin floor access panel CF2L. (Refer to 06-00)
 - (f) *Serials 0795, 0820 thru 1601, 1603 thru 1820, 1822 thru 1839, 1841 thru 1862:* Install RH crew seat. (Refer to 25-10)
 - (g) *Serials 1602, 1821, 1840, 1863 & subs:* Install LH crew seat. (Refer to 25-10)
 - (h) Perform Adjustment/Test - Crew Seat Harness. (Refer to 25-10)

**E. Interface Cable - Serials 1500, 1520 & subs, 0795, 0820 - 1499, 1501 - 1519 after SB 2X-25-14
(See Figure 25-104)**

- (1) Removal - Interface Cable
 - (a) Remove crew seats. (Refer to 25-10)
 - (b) *Serials 0795, 0820 thru 1601, 1603 thru 1820, 1822 thru 1839, 1841 thru 1862:* Remove cabin floor access panels CF1R, CF2R, and CF2L. (Refer to 06-00)
 - (c) *Serials 1602, 1821, 1840, 1863 & subs:* Remove cabin floor access panels CF1R, CF1L, and CF2L. (Refer to 06-00)
 - (d) Remove right mid console trim. (Refer to 25-10)
 - (e) At RH center console flange, disconnect diagnostic connector assembly from center console by sliding connector assembly forward and off mounting rail.
 - (f) Remove screw, washer, and clamp securing interface cable to bracket mounted on seat attach bracket. Repeat for opposite side of airplane.
 - (g) Remove cable ties securing interface cable to cable tiedowns on spar tunnel.
 - (h) Disconnect interface cable from electronic module assembly.
 - (i) *Serials 0795, 0820 thru 1601, 1603 thru 1820, 1822 thru 1839, 1841 thru 1862:* Route interface cables.
 - 1 At RH aft corner of fuselage floor, route RH branch of interface cable from electronic module assembly aft along floor, and down through fuselage floor. Route interface cable along forward surface of spar tunnel, RH forward longeron, and up through RH pass-through hole.
 - 2 At LH aft corner of fuselage floor, route LH branch of interface cable down through fuselage floor, along forward surface of spar tunnel, LH forward longeron, and up through LH pass-through hole.
 - (j) *Serials 1602, 1821, 1840, 1863 & subs:* Route interface cables.
 - 1 At LH aft corner of fuselage floor, route LH branch of interface cable from electronic module assembly aft along floor, and down through fuselage floor. Route interface cable along forward surface of spar tunnel, LH forward longeron, and up through LH pass-through hole.
 - 2 At RH aft corner of fuselage floor, route RH branch of interface cable down through fuselage floor, along forward surface of spar tunnel, RH forward longeron, and up through RH pass-through hole.
 - (k) At center console, locate diagnostic connector assembly of interface cable extending from two pass-through holes in fuselage floor just aft of the forward pulley gang. Retrieve remaining interface cable from pass-through holes and remove interface cable from airplane.
- (2) Disassembly - Interface Cable

To disassemble diagnostic connector mounting rail, perform the following steps:

 - (a) Remove right mid console trim. (Refer to 25-10)
 - (b) At RH center console flange, disconnect diagnostic connector assembly from center console by sliding connector assembly forward and off mounting rail.
 - (c) Remove screws securing mounting rail to RH center console flange.
- (3) Assembly - Interface Cable

To assemble diagnostic connector mounting rail, perform the following steps:

 - (a) Install screws securing mounting rail to RH center console flange.
 - (b) Install connector assembly to RH center console flange by sliding plug aft on mounting rail until connector assembly locks into place.
 - (c) Install right mid console trim. (Refer to 25-10)

(4) Installation - Interface Cable

- (a) Acquire necessary tools, equipment, and supplies.

Description	P/N or Spec.	Supplier	Purpose
Cable Ties	-	Any Source	Secure cable.

- (b) At center console, locate pass-through holes in fuselage floor aft of forward pulley gang.
- (c) *Serials 0795, 0820 thru 1601, 1603 thru 1820, 1822 thru 1839, 1841 thru 1862:* Route interface cables.
- 1 Route LH branch of interface cable through LH pass-through hole, LH forward longeron, along forward surface of spar tunnel, and up through LH aft corner of fuselage floor.
 - 2 Route RH branch of interface cable through RH pass-through hole, RH forward longeron, and along forward surface of spar tunnel. At RH aft corner of fuselage floor, route RH branch of wire harness up through fuselage floor, and electronic module assembly branch of wire harness forward along floor.
- (d) *Serials 1602, 1821, 1840, 1863 & subs:* Route interface cables.
- 1 Route RH branch of interface cable through RH pass-through hole, RH forward longeron, along forward surface of spar tunnel, and up through RH aft corner of fuselage floor.
 - 2 Route LH branch of interface cable through LH pass-through hole, LH forward longeron, and along forward surface of spar tunnel. At LH aft corner of fuselage floor, route LH branch of wire harness up through fuselage floor, and electronic module assembly branch of wire harness forward along floor.
- (e) Connect interface cable to electronic module assembly.
- (f) Position interface cable to cable tiedowns on spar tunnel and secure with cable ties.
- (g) Position interface cable to bracket mounted on seat attach bracket and secure with screw, washer, and clamp. Repeat for opposite side of airplane.
- (h) Install connector assembly to RH center console flange by sliding plug aft on mounting rail until connector assembly locks into place.
- (i) Install right mid console trim. ([Refer to 25-10](#))
- (j) *Serials 0795, 0820 thru 1601, 1603 thru 1820, 1822 thru 1839, 1841 thru 1862:* Install cabin floor access panels CF1R, CF2R, and CF2L. ([Refer to 06-00](#))
- (k) *Serials 1602, 1821, 1840, 1863 & subs:* Install cabin floor access panels CF1R, CF1L, and CF2L. ([Refer to 06-00](#))
- (l) Install crew seats. ([Refer to 25-10](#))
- (m) Perform Adjustment/Test - Crew Seat Harness. ([Refer to 25-10](#))

F. Inflator Cable - Serials 1500, 1520 & subs, 0795, 0820 - 1499, 1501 - 1519 after SB 2X-25-14 (See Figure 25-104)

- (1) Removal - Inflator Cable
 - (a) Disassemble crew seat recline handle. (Refer to 25-10)

CAUTION: Use care to avoid damaging upholstery on recline handle shafts.

- (b) At lower, aft crew seat back, release reclosable fasteners and slide upholstery upward to expose seat back frame.
 - (c) Remove cable ties securing inflator cable to cable tiedowns on spar tunnel.
 - (d) Disconnect inflator cable from inflator assembly.
 - (e) Disconnect inflator cable from interface cable. Remove inflator cable from airplane.
- (2) Installation - Inflator Cable
 - (a) Acquire necessary tools, equipment, and supplies.

Description	P/N or Spec.	Supplier	Purpose
Cable Ties	-	Any Source	Secure cable.

- (b) Connect inflator cable to interface cable.
 - (c) Connect inflator cable to inflator assembly.
 - (d) Position inflator cable to cable tiedowns on seat back and secure with cable ties.
 - (e) Place seat back upholstery into position and press firmly on reclosable fasteners to secure upholstery to seat back.
 - (f) Assemble crew seat recline handle. (Refer to 25-10)
 - (g) Perform Adjustment/Test - Crew Seat Harness. (Refer to 25-10)

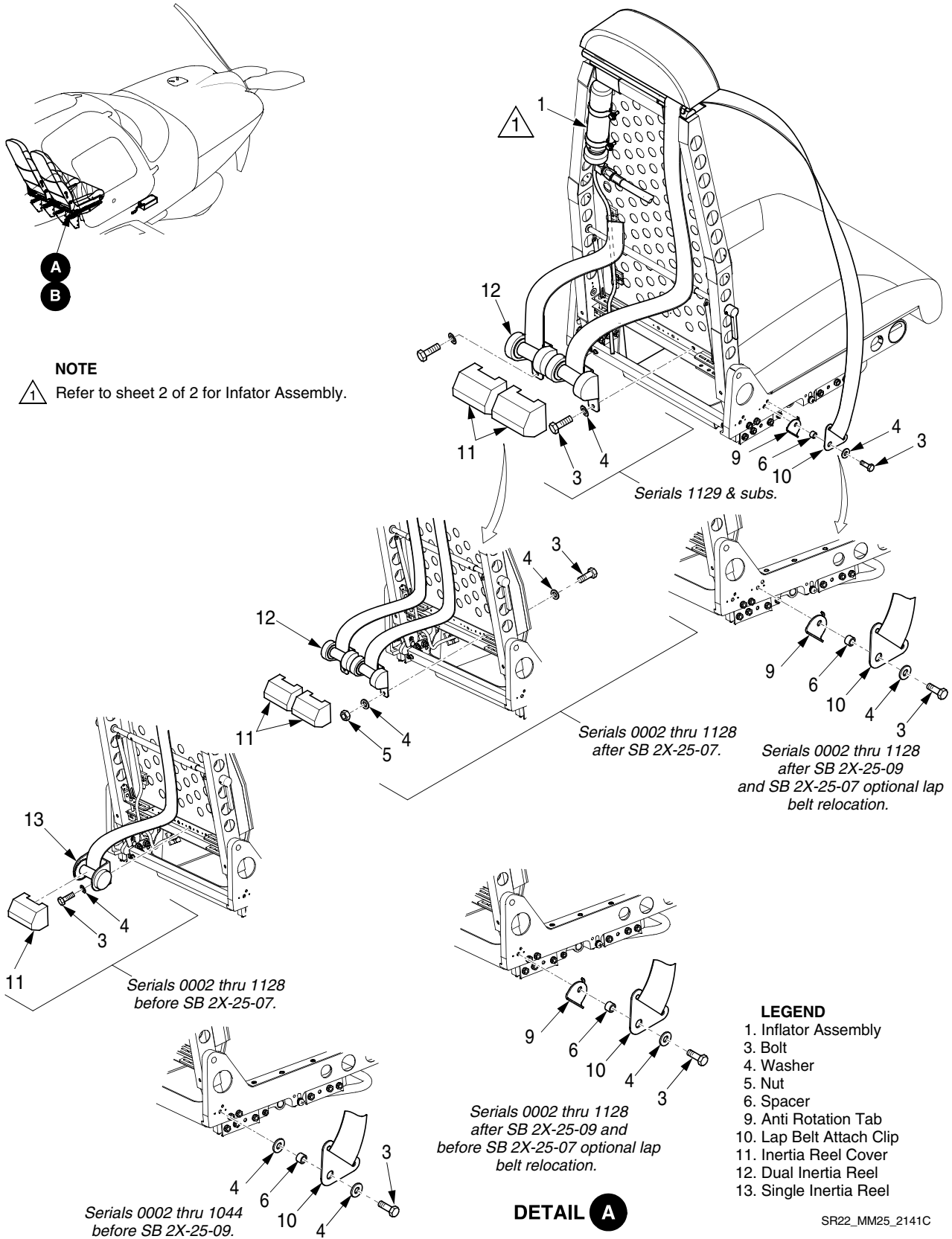
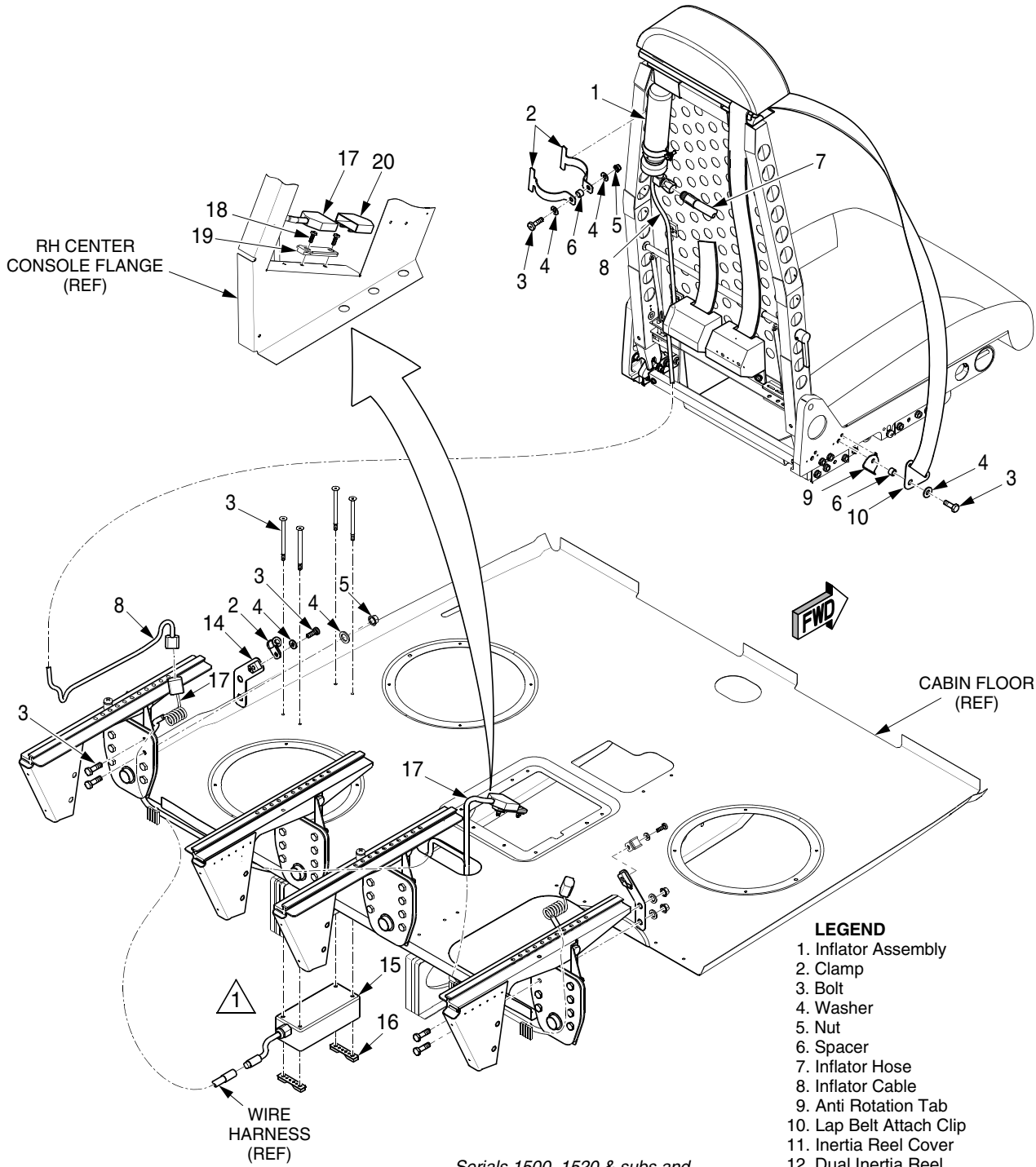


Figure 25-104
Crew Seat Harness and Inflator Assembly Installation (Sheet 1 of 2)

EFFECTIVITY:
 All



- LEGEND**
1. Inflator Assembly
 2. Clamp
 3. Bolt
 4. Washer
 5. Nut
 6. Spacer
 7. Inflator Hose
 8. Inflator Cable
 9. Anti Rotation Tab
 10. Lap Belt Attach Clip
 11. Inertia Reel Cover
 12. Dual Inertia Reel
 13. Single Inertia Reel
 14. Bracket
 15. Electronic Module Assembly
 16. Plate Assembly
 17. Interface Cable
 18. Screw
 19. Mounting Rail
 20. Connector Plug
- SR22_MM25_2252B

Serials 1500, 1520 & subs and
Serials 0795, 0820 thru 1499,
1501 thru 1519 after SB 2X-25-14.

DETAIL B

NOTE

⚠ Serials 0795, 0820 thru 1601, 1603 thru 1820,
1822 thru 1839, 1841 thru 1862:
Installed on RH side of cabin floor.

**Figure 25-104
Crew Seat Harness and Inflator Assembly Installation (Sheet 2 of 2)**

G. Passenger Seats (See Figure 25-105)

CAUTION: Detent pins must be installed when occupants are seated in the passenger seats.

Avoid kneeling or stepping on seats so as to not crush energy absorption modules.

(1) Removal - Passenger Seats

- (a) Remove seat cushion.
- (b) Remove cotter pins used to secure the seat assembly to floor.

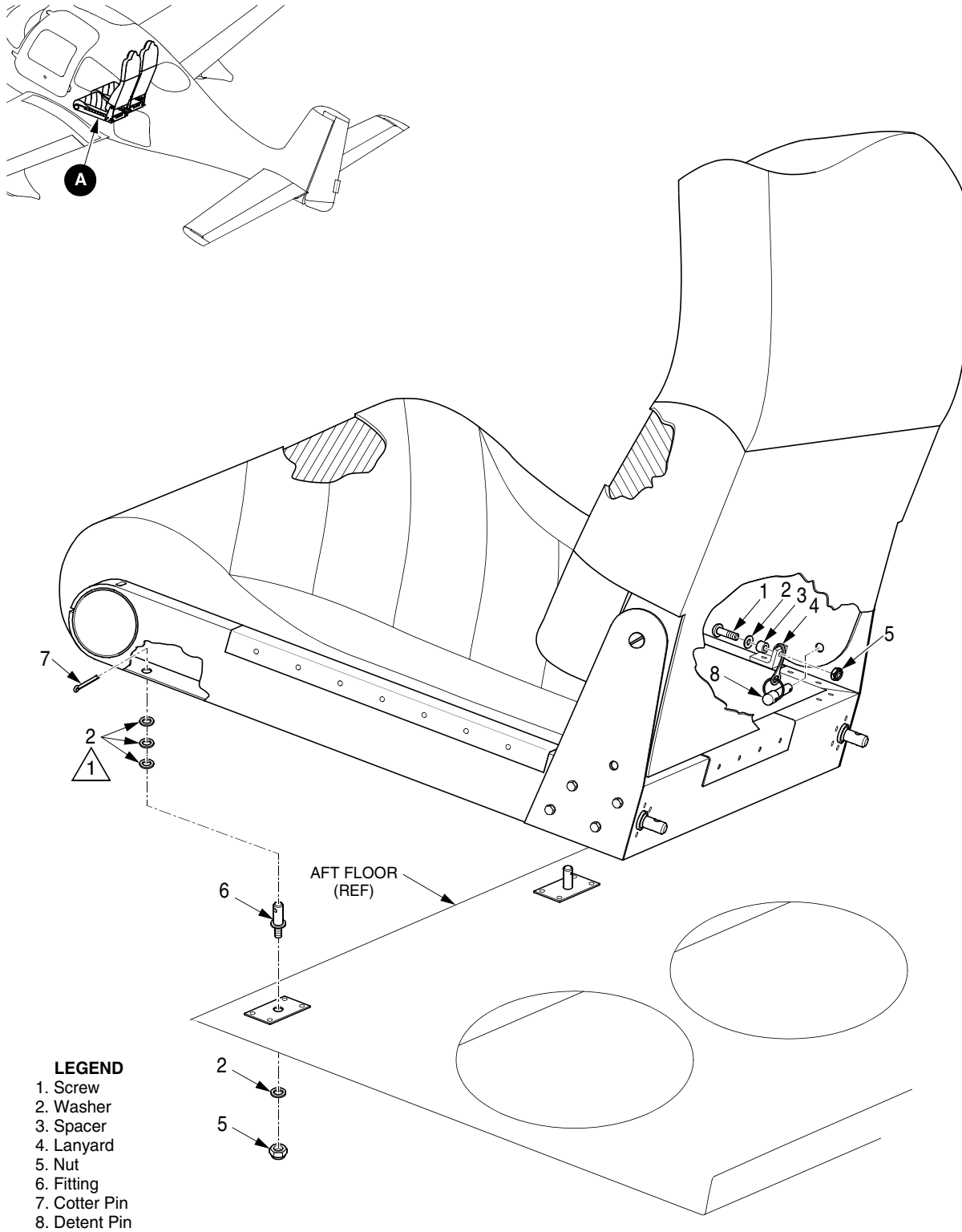
Note: Access to detent pins is best achieved through the baggage door.

- (c) Remove the detent pins from the seat back.
- (d) Lift forward edge of seat assembly up, pull seat assembly forward, and remove seats.

(2) Installation - Passenger Seats

- (a) Install seats on aft floor and insert the rear studs into the attach fittings.
- (b) Secure forward seat brackets with cotter pins.
- (c) Place the detent pins into position.
- (d) Secure seat cushion.

(3) Cleaning - Passenger Seats ([Refer to 12-20](#))



LEGEND

- 1. Screw
- 2. Washer
- 3. Spacer
- 4. Lanyard
- 5. Nut
- 6. Fitting
- 7. Cotter Pin
- 8. Detent Pin

NOTE

1 Install up to three washers per pin as required.

DETAIL A

SR22_MM25_1417B

Figure 25-105
Passenger Seat

EFFECTIVITY:
All

H. Rear Seat Harness (See Figure 25-106)

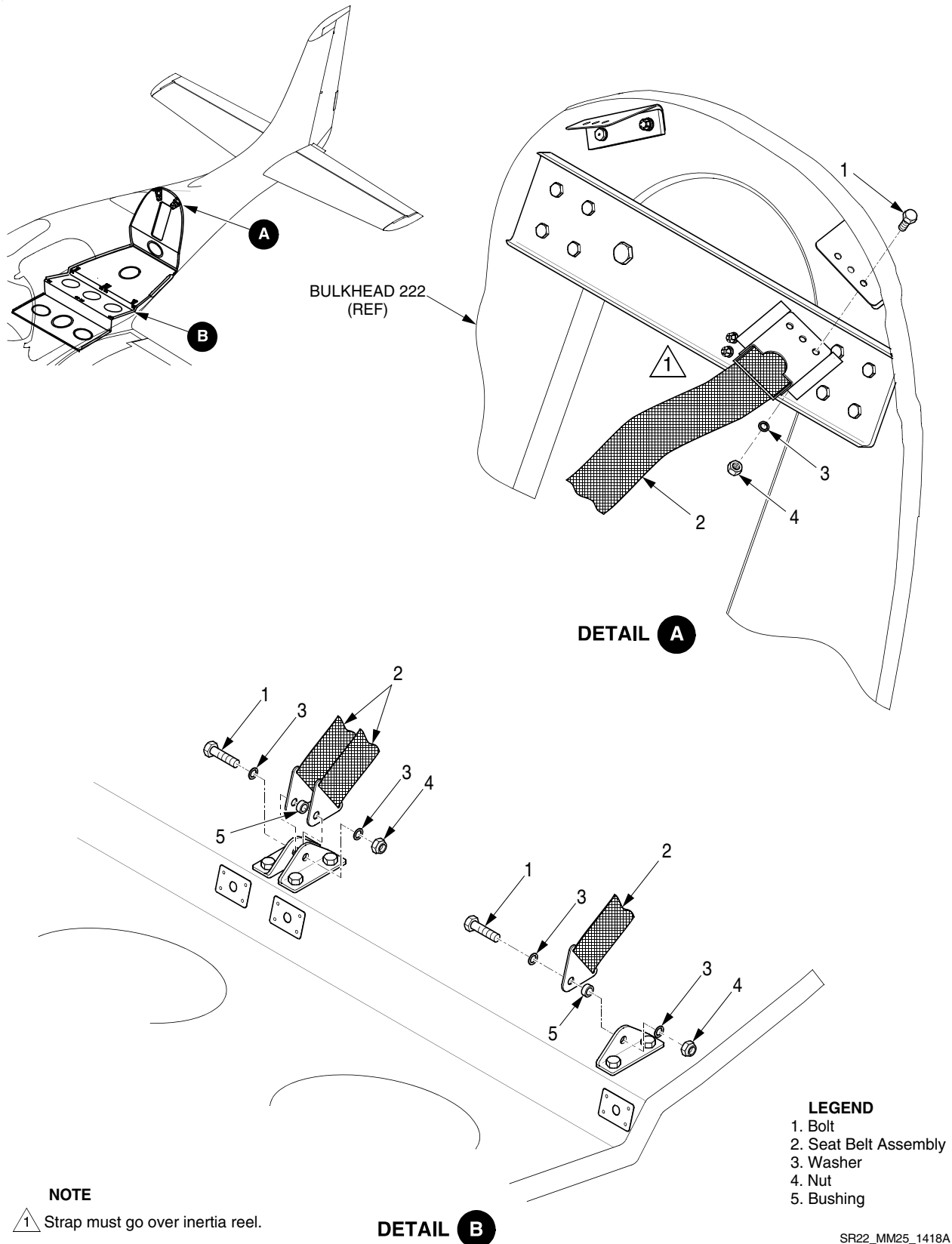
- (1) Removal - Rear Seat Harness
 - (a) Remove the bolt, washer, bushing, washer, and nylon self-locking nut from lower outboard harness mount.
 - (b) Remove the bolt, washer, bushing, washer, and self-locking nut from lower central harness mount.
 - (c) Remove the aft bulkhead trim panel and the rear headliner. (Refer to 25-10)
 - (d) Remove the bolts, washers, and self-locking nuts from upper seat harness mount.
- (2) Installation - Rear Seat Harness
 - (a) Install the two lower central lap harnesses into the lower central harness mount.
 - (b) Insert the bushing, bolt, and washer through the harness mount and both harnesses.
 - (c) Install flat washer and self-locking nut. Tighten self-locking nut.

WARNING: Inertia reel must be installed with harness coming off the top side of inertia reel. The inertia reel plate must be installed on the underside of mount.

- (d) Install inertia reel plate on the underside of mount and secure with three bolts, washers, and self-locking nuts.
 - (e) Secure aft bulkhead trim panel. (Refer to 25-10)
 - (f) Install the lower outboard harness mount, and secure with bolt, washer, bushing, washer, and nylon self-locking nut.
 - (g) Perform Inspection/Check - Rear Seat Harness. (Refer to 25-10)
- (3) Inspection/Check - Rear Seat Harness
 - (a) Examine harness webbing for cut or worn edges, damaged stitching, broken fabric threads, tears, excessive chafe marks, excessive wear, excessive fusing.

Note: A limited amount of “frayed” webbing will retain sufficient strength necessary to meet the strength requirements of the webbing. Frayed webbing is defined as broken filaments from either the longitudinal or transverse yarns.

- (b) Verify that broken or fraying webbing filaments are not numerous enough to obscure the identity of any yarn when viewed from a distance of about 8.0 inches (20.3 cm).



SR22_MM25_1418A

Figure 25-106
Rear Seat Harness

I. Console Trim (See Figure 25-107)

CAUTION: Remove trim secured with reclosable fasteners carefully so as to not damage fasteners or trim.

Remove any sharp objects from pockets or clothing to avoid damaging interior panels or upholstery.

Note: It is useful in most instances to remove crew and/or passenger seats to improve access to interior trim panels during removal or installation procedures.

- (1) Removal - Glareshield Assembly
 - (a) *Serials 0002 thru 0820:* Remove instrument panel-glareshield mounting screw that is located at upper LH-edge of instrument panel.
 - (b) Remove glareshield mounting screws from LH and RH edges of windshield trim.
 - (c) Remove MFD. (Refer to 31-60)
 - (d) Disconnect GPS antenna lead(s) located underneath the glareshield.
 - (e) Disconnect the glareshield light wire harness.
 - (f) *Serials 0002 thru 0820:* Remove the glareshield mounting screws located just inside of the MFD opening, underneath the glareshield.
 - (g) Lift edge of glareshield to release the reclosable fasteners. Remove glareshield.
- (2) Installation - Glareshield Assembly
 - (a) Place glareshield into position and secure. Press firmly on trim in areas of reclosable fasteners.
 - (b) *Serials 0002 thru 0820:* Install the glareshield mounting screws located just inside of the MFD opening, underneath the glareshield.
 - (c) Connect the glareshield light wire harness.
 - (d) Connect GPS antenna lead(s) located underneath the glareshield.
 - (e) Install MFD. (Refer to 31-60)
 - (f) Install glareshield mounting screws to LH and RH edges of windshield trim.
 - (g) *Serials 0002 thru 0820:* Tighten instrument panel-glareshield mounting screw that is located at upper LH-edge of instrument panel.
- (3) Removal - Lower Windshield Trim
 - (a) Remove both door seals. (Refer to 52-10)
 - (b) Remove A-pillar trim. (Refer to 25-10)
 - (c) Remove glareshield. (Refer to 25-10)
 - (d) *Serials 0002 thru 0820:* Remove two outside edge screws securing lower windshield trim to instrument panel.
 - (e) *Serials 0821 & subs:* Disengage quarter-turn studs securing brackets to lower windshield trim.
 - (f) *Serials 0821 & subs:* Remove screws securing lower windshield trim to bolster trim.
 - (g) Lift edge of lower windshield trim to release reclosable fasteners. Remove windshield trim.
- (4) Installation - Lower Windshield Trim
 - (a) Place windshield trim into position and secure. Press firmly on trim in areas of reclosable fasteners.
 - (b) *Serials 0821 & subs:* Install screws securing lower windshield trim to bolster trim.
 - (c) *Serials 0002 thru 0820:* Install two outside edge screws securing lower windshield trim to instrument panel.
 - (d) *Serials 0821 & subs:* Position brackets to lower windshield trim assembly. Engage quarter-turn studs securing brackets to lower windshield trim.

- (e) Install glareshield. (Refer to 25-10)
- (f) Install A-pillar trim. (Refer to 25-10)
- (g) Install both door seals. (Refer to 52-10)
- (5) Removal - Right Bolster Trim
 - (a) Remove right door seal. (Refer to 52-10)
 - (b) Remove right A-pillar trim. (Refer to 25-10)
 - (c) *Serials 0002 thru 2437*: Loosen screws securing lower RH instrument panel.
 - (d) Remove screws securing bolster trim to lower windshield trim.
 - (e) Lift edge of lower windshield trim to release reclosable fasteners.
 - (f) Lift edge of right bolster trim and release reclosable fasteners. Remove trim.
- (6) Installation - Right Bolster Trim
 - (a) Place right bolster trim into position and secure. Firmly push on trim in areas of reclosable fasteners.
 - (b) Secure lower windshield trim. Press firmly on trim in areas of reclosable fasteners.
 - (c) Install screws securing bolster trim to lower windshield trim.
 - (d) *Serials 0002 thru 2437*: Tighten screws securing lower RH instrument panel.
 - (e) Install right A-pillar trim. (Refer to 25-10)
 - (f) Install right door seal. (Refer to 52-10)
- (7) Removal - Left Bolster Trim
 - (a) Verify ignition switch is in the OFF position and remove key.
 - (b) Disconnect battery. (Refer to 24-30)
 - (c) Remove left door seal. (Refer to 52-10)
 - (d) Remove left A-pillar trim. (Refer to 25-10)
 - (e) *Serials 0002 thru 0138*: Remove screws securing the three interior light knobs.
 - (f) *Serials 0002 thru 0434, 0435 thru 0820 w/o PFD*: Remove nut securing ignition switch. (Refer to 74-30)
 - (g) *Serials 0002 thru 2437*: Loosen screws securing lower LH instrument panel.
 - (h) Remove screws securing bolster switch panel. Remove panel.
 - (i) Remove screws securing bolster trim to lower windshield trim.
 - (j) Lift edge of lower windshield trim to release reclosable fasteners.
 - (k) Lift edge of left bolster trim and release reclosable fasteners. Remove trim.
- (8) Installation - Left Bolster Trim
 - (a) Place left bolster trim into position and secure. Press firmly on trim in areas of reclosable fasteners.
 - (b) Install screws securing bolster trim to lower windshield trim.
 - (c) Secure bolster switch panel with screws.
 - (d) *Serials 0002 thru 2437*: Tighten screws securing lower LH instrument panel.
 - (e) *Serials 0002 thru 0434, 0435 thru 0820 w/o PFD*: Tighten ignition switch nut finger tight until snug. (Refer to 74-30)
 - (f) *Serials 0002 thru 0138*: Secure the three interior light knobs with screws.
 - (g) Install left A-pillar trim. (Refer to 25-10)
 - (h) Install left door seal. (Refer to 52-10)
 - (i) Connect battery. (Refer to 24-30)

- (9) Removal - Center Bolster Trim
- (a) *Serials 0002 thru 2437*: Remove trim.
- 1 Remove screws securing center bolster trim to left bolster trim.
 - 2 Remove screws securing center bolster trim to right bolster trim.
 - 3 Lift edge of center bolster trim and release reclosable fasteners. Remove trim.
- (b) *Serials 2438 & subs*: Remove trim.
- 1 Remove glove box or MFD to access trim mounting screw. (Refer to 25-10) (Refer to 31-60)
 - 2 Remove screws securing bolster switch panel. Remove panel.
 - 3 Remove screws securing center bolster trim to center console.
 - 4 Loosen screws securing lower instrument panel.
 - 5 Lift edge of center bolster trim and release reclosable fasteners. Remove trim.
- (10) Installation - Center Bolster Trim
- (a) *Serials 0002 thru 2437*: Install trim.
- 1 Place center bolster trim into position and secure. Press firmly on trim in areas of reclosable fasteners.
 - 2 Secure center bolster trim to right bolster trim with screws.
 - 3 Secure center bolster trim to left bolster trim with screws.
- (b) *Serials 2438 & subs*: Install trim.
- 1 Place center bolster trim into position and secure. Press firmly on trim in areas of reclosable fasteners.
 - 2 Tighten screws securing lower instrument panel.
 - 3 Install screws securing center bolster trim to center console.
 - 4 Secure bolster switch panel with screws.
 - 5 Install glove box or MFD. (Refer to 25-10) (Refer to 31-60)
- (11) Removal - Right Aft Console Trim
- (a) Remove co-pilot seat. (Refer to 25-10)
- (b) Remove control-quadrant friction knob and washer. (Refer to 76-10)
- (c) Remove right mid console trim. (Refer to 25-10)
- (d) Remove right aft console trim screws and remove trim.
- (12) Installation - Right Aft Console Trim
- (a) Secure right aft console trim with screws.
- (b) Install right mid console trim. (Refer to 25-10)
- (c) Install control-quadrant friction knob and washer. (Refer to 76-10)
- (d) Install co-pilot seat. (Refer to 25-10)
- (13) Removal - Left Aft Console Trim
- (a) Remove pilot seat. (Refer to 25-10)
- (b) Remove left mid console circuit breaker trim. (Refer to 25-10)
- (c) Remove left aft console trim screws and remove trim.
- (14) Installation - Left Aft Console Trim
- (a) Secure left aft console trim with screws.
- (b) Install left mid console circuit breaker trim. (Refer to 25-10)
- (c) Install pilot seat. (Refer to 25-10)
- (15) Removal - Left Mid Console Circuit Breaker Trim
- (a) Lift forward edge of alternate static source cover plate and release reclosable fasteners. Remove cover plate.
- (b) Lift forward edge of left mid console circuit breaker trim and release reclosable fasteners. Remove trim.

- (16) Installation - Left Mid Console Circuit Breaker Trim
 - (a) Place left mid console circuit breaker trim into position and press firmly on trim in areas of reclosable fasteners.
 - (b) Place alternate static source cover plate into position and press firmly on trim in areas of reclosable fasteners.
- (17) Removal - Right Mid Console Trim
 - (a) Remove right mid console trim screws.
 - (b) Lift forward edge of trim and release reclosable fasteners. Remove trim.
- (18) Installation - Right Mid Console Trim
 - (a) Place trim into position and secure. Press firmly on trim in areas of reclosable fasteners.
 - (b) Install screws securing right mid console trim.
- (19) Removal - Right Aft Console Lower Panel Trim
 - (a) Remove co-pilot seat. (Refer to 25-10)
 - (b) Remove screws securing right aft console lower panel trim.
 - (c) Lift forward edge of trim and release reclosable fasteners. Remove trim.
- (20) Installation - Right Aft Console Lower Panel Trim
 - (a) Place trim into position and secure. Press firmly on trim in areas of reclosable fasteners.
 - (b) Install screws securing right aft console lower panel trim.
 - (c) Install co-pilot seat. (Refer to 25-10)
- (21) Removal - Left Aft Console Lower Panel Trim
 - (a) Remove pilot seat. (Refer to 25-10)
 - (b) Remove fire extinguisher. (Refer to 26-20)
 - (c) Remove screws securing left aft console lower panel trim.
 - (d) Lift forward edge of trim and release reclosable fasteners. Remove trim.
- (22) Installation - Left Aft Console Lower Panel Trim
 - (a) Place trim into position and secure. Press firmly on trim in areas of reclosable fasteners.
 - (b) Install screws securing left aft console lower panel trim.
 - (c) Install fire extinguisher. (Refer to 26-20)
 - (d) Install pilot seat. (Refer to 25-10)
- (23) Removal - Center Armrest Console
 - (a) *Serials 0002 thru 2036, 2038 thru 2042, 2381 & subs:* Open center armrest console and remove screw, washer, lanyard, and spacer from armrest.
 - (b) Remove armrest mounting screws and remove armrest.
- (24) Installation - Center Armrest Console
 - (a) Place center armrest console into position and secure with screws.
 - (b) *Serials 0002 thru 2036, 2038 thru 2042, 2381 & subs:* Secure lanyard with screw, washer, and spacer.
- (25) Removal - Aft Console Rear Cover
 - (a) Remove screws securing aft console rear cover to center console.
- (26) Installation - Aft Console Rear Cover
 - (a) Place cover into position and secure with screws.
- (27) Removal - Kick Plate
 - (a) Remove mid console trim. (Refer to 25-10)
 - (b) *Serials 2438 & subs:* Remove screws, washers, and nuts securing kick plate to parking brake cable bracket.
 - (c) Remove screws securing kick plate to lower console rib.
 - (d) Remove cable tie from air duct and remove duct.

- (e) *Serials 1036 & subs w/ TAWS:* For LH kick plate, disconnect connectors from TAWS processor. (Refer to 34-40)
- (f) *Serials 0002 thru 1601, 1603 thru 1643, 1645 thru 1662 w/ Engine Monitoring:* For RH kick plate, disconnect connectors from Sensor Interface Unit. (Refer to 77-30)
- (g) *Serials 1602, 1644, 1663 & subs:* For RH kick plate, disconnect connectors from Data Acquisition Unit. (Refer to 77-30)

CAUTION: Ensure that kick plate edges do not contact any adjacent trim during removal procedures to avoid damage to trim.

- (h) Remove kick plate from airplane.
- (28) Installation - Kick Plate

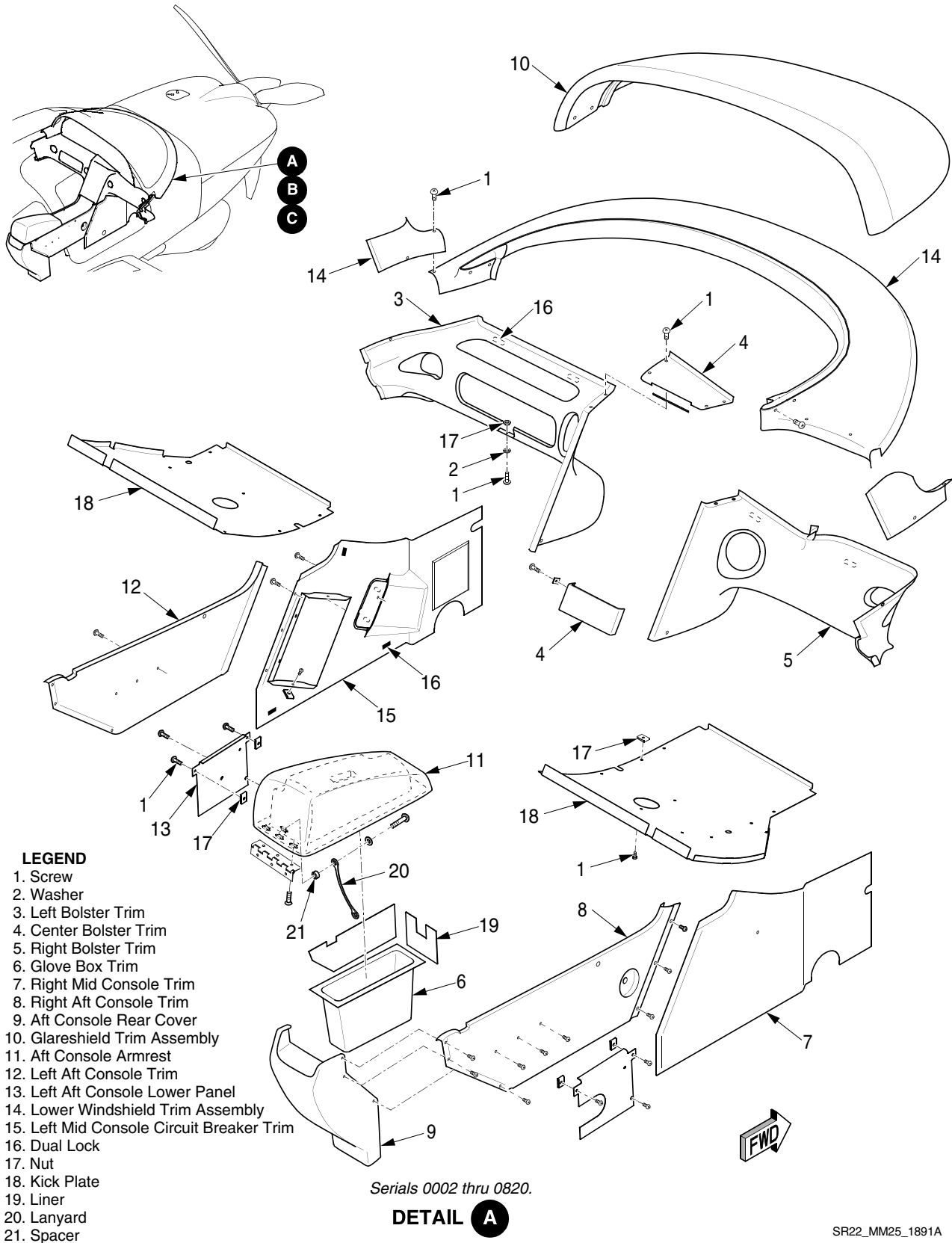
- (a) Acquire necessary tools, equipment, and supplies.

Description	P/N or Spec.	Supplier	Purpose
Cable Tie	8 inch	Any Source	Secure duct.

CAUTION: Ensure that kick plate edges do not contact any adjacent trim during installation procedures to avoid damage to trim.

- (b) Place kick plate into position at lower console rib.
- (c) *Serials 1036 & subs w/ TAWS:* For LH kick plate, connect connectors to TAWS processor. (Refer to 34-40)
- (d) *Serials 0002 thru 1601, 1603 thru 1643, 1645 thru 1662 w/ Engine Monitoring:* For RH kick plate, connect connectors to Sensor Interface Unit. (Refer to 77-30)
- (e) *Serials 1602, 1644, 1663 & subs:* For RH kick plate, connect connectors to Data Acquisition Unit. (Refer to 77-30)
- (f) Secure air duct to vent with cable tie.
- (g) Secure kick plate to lower console rib with screws.
- (h) *Serials 2438 & subs:* Install screws, washers, and nuts securing kick plate to parking brake cable bracket.
- (i) Install mid console trim. (Refer to 25-10)

EFFECTIVITY:
All



Serials 0002 thru 0820.

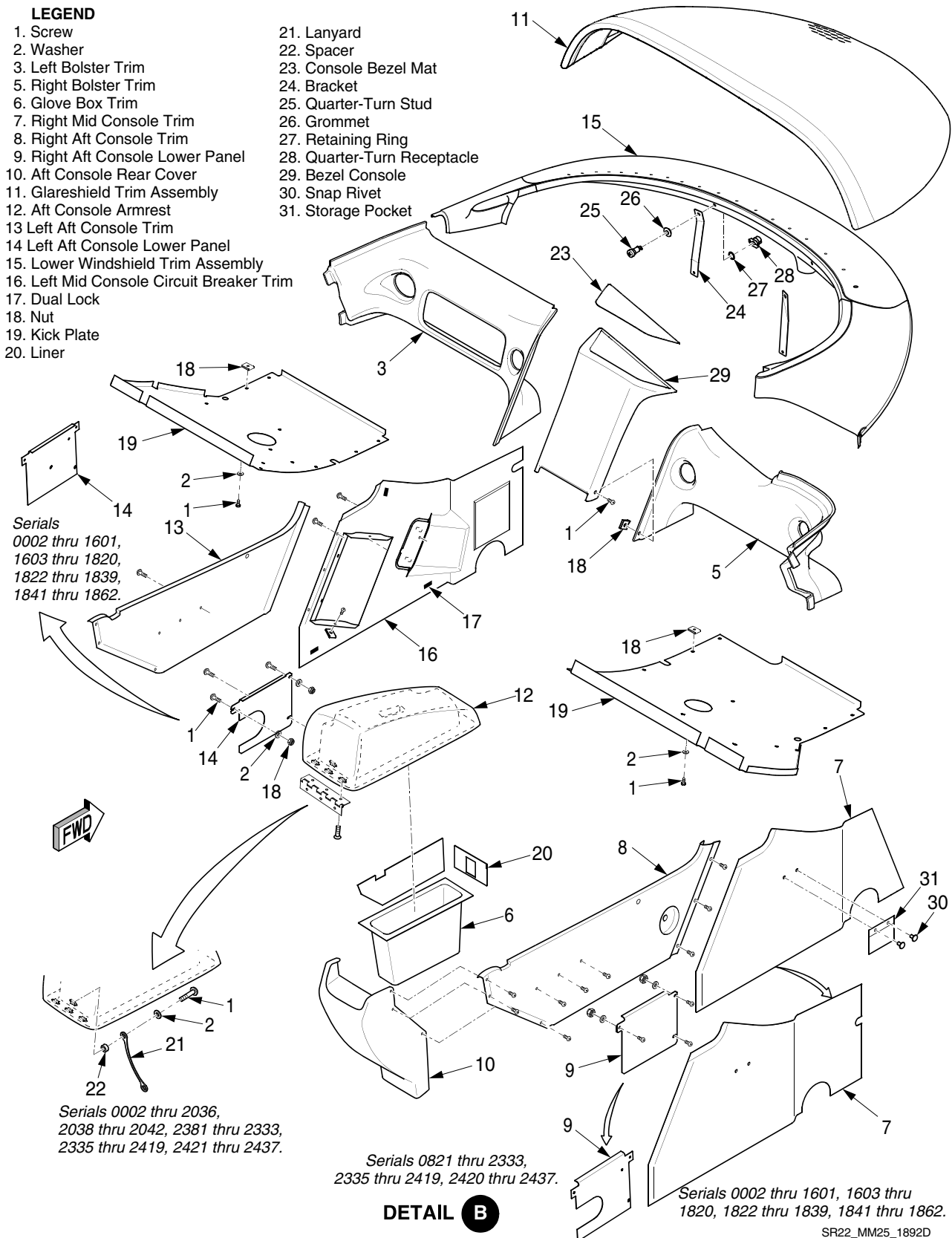
DETAIL A

SR22_MM25_1891A

Figure 25-107
Console Trim - Serials 0002 thru 0820 (Sheet 1 of 3)

LEGEND

- | | |
|---|-----------------------------|
| 1. Screw | 21. Lanyard |
| 2. Washer | 22. Spacer |
| 3. Left Bolster Trim | 23. Console Bezel Mat |
| 5. Right Bolster Trim | 24. Bracket |
| 6. Glove Box Trim | 25. Quarter-Turn Stud |
| 7. Right Mid Console Trim | 26. Grommet |
| 8. Right Aft Console Trim | 27. Retaining Ring |
| 9. Right Aft Console Lower Panel | 28. Quarter-Turn Receptacle |
| 10. Aft Console Rear Cover | 29. Bezel Console |
| 11. Glareshield Trim Assembly | 30. Snap Rivet |
| 12. Aft Console Armrest | 31. Storage Pocket |
| 13. Left Aft Console Trim | |
| 14. Left Aft Console Lower Panel | |
| 15. Lower Windshield Trim Assembly | |
| 16. Left Mid Console Circuit Breaker Trim | |
| 17. Dual Lock | |
| 18. Nut | |
| 19. Kick Plate | |
| 20. Liner | |



DETAIL B

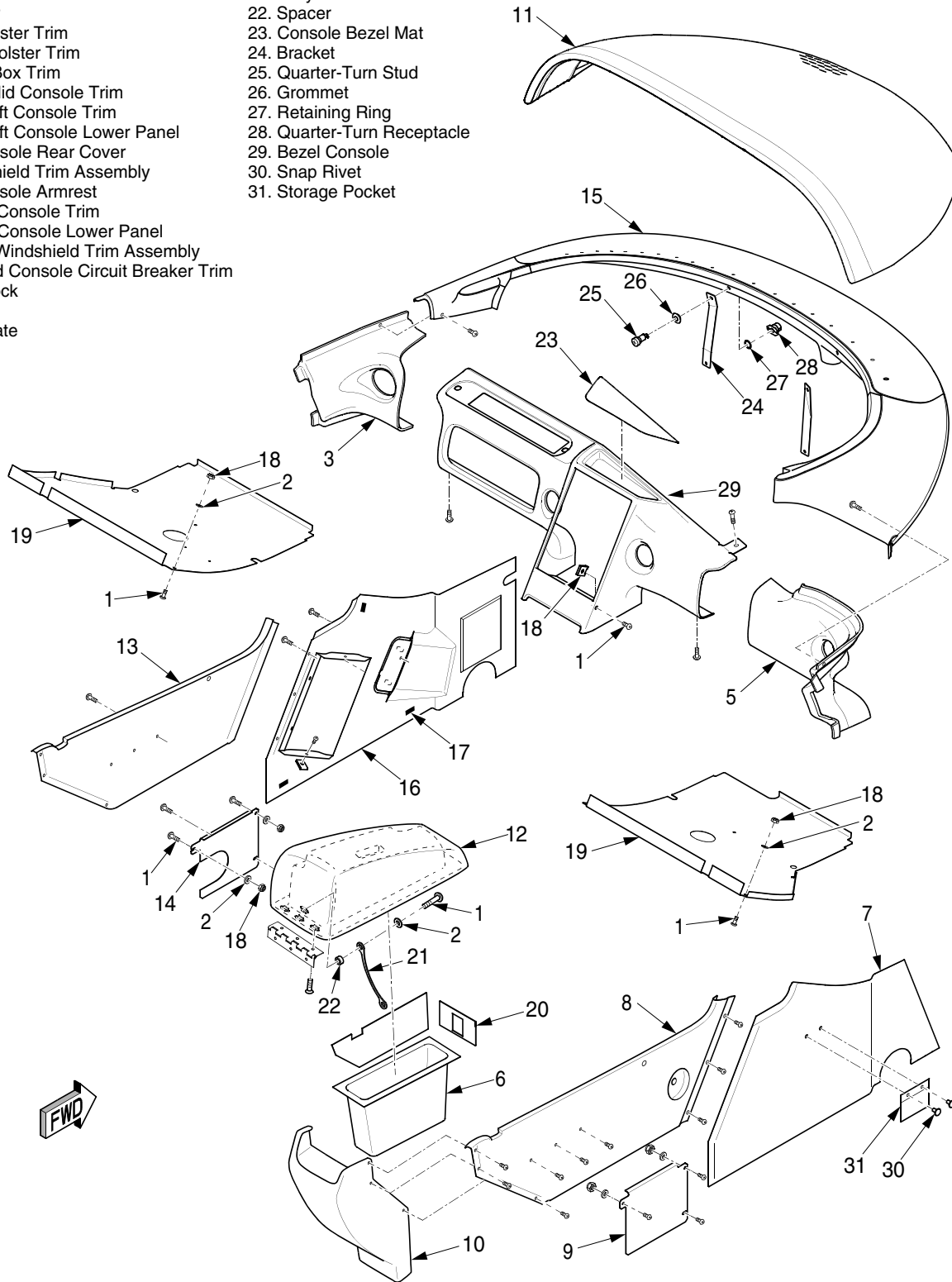
Figure 25-107
Console Trim - Serials 0821 thru 2437 (Sheet 2 of 3)

EFFECTIVITY:
 Serials 0821 thru 2437

SR22_MM25_1892D

LEGEND

- | | |
|---|-----------------------------|
| 1. Screw | 21. Lanyard |
| 2. Washer | 22. Spacer |
| 3. Left Bolster Trim | 23. Console Bezel Mat |
| 5. Right Bolster Trim | 24. Bracket |
| 6. Glove Box Trim | 25. Quarter-Turn Stud |
| 7. Right Mid Console Trim | 26. Grommet |
| 8. Right Aft Console Trim | 27. Retaining Ring |
| 9. Right Aft Console Lower Panel | 28. Quarter-Turn Receptacle |
| 10. Aft Console Rear Cover | 29. Bezel Console |
| 11. Glareshield Trim Assembly | 30. Snap Rivet |
| 12. Aft Console Armrest | 31. Storage Pocket |
| 13. Left Aft Console Trim | |
| 14. Left Aft Console Lower Panel | |
| 15. Lower Windshield Trim Assembly | |
| 16. Left Mid Console Circuit Breaker Trim | |
| 17. Dual Lock | |
| 18. Nut | |
| 19. Kick Plate | |
| 20. Liner | |



DETAIL C

SR22_MM25_2499

Figure 25-107
Console Trim - Serials 2438 & subs (Sheet 3 of 3)

J. Mid and Aft Trim (See Figure 25-108)

- (1) Removal - Door Handle: *Serials 0821 & subs*

CAUTION: Door handle screws cannot be re-used. If removed, screws must be discarded and replaced with new screws.

- (a) On door interior, remove screws securing door handle to door. Remove door handle.
- (2) Installation - Door Handle: *Serials 0821 & subs*
 - (a) On door interior, position door handle to door.
 - (b) Secure door handle to door with screws.
- (3) Removal - Interior Door Trim
 - (a) *Serials 0821 & subs:* Remove handle lever. (Refer to 52-10)
 - (b) Remove armrest trim. (Refer to 25-10)
 - (c) Remove screws securing trim to door.
 - (d) Gently lift corner of door trim and release reclosable fasteners. Remove door trim.
- (4) Installation - Interior Door Trim
 - (a) Place trim into position and press firmly on trim in areas of reclosable fasteners.
 - (b) Secure trim with screws.
 - (c) Install armrest trim. (Refer to 25-10)
 - (d) *Serials 0821 & subs:* Install handle lever. (Refer to 52-10)
- (5) Removal - Sidewall Air Duct Trim
 - (a) Acquire necessary tools, equipment, and supplies.

Description	P/N or Spec.	Supplier	Purpose
Putty Knife	-	Any Source	Cut tape bond.
Plastic Scraper	-	Any Source	Remove tape residue.
Isopropyl Alcohol	TT-I-735 Grade A or B	Any Source	Clean installation area.
Cotton Cloth (clean and lint free)	-	Any Source	Clean installation area.

- (b) Remove door seal. (Refer to 52-10)

CAUTION: When cutting foam tape, ensure knife blade does not penetrate too far and damage trim or fuselage skin.

- (c) *Serials 0002 thru 0820:* Remove screws securing rear section of sidewall air duct trim to forward section of rear cabin side trim.
- (d) Lift forward edge of trim and slowly pull trim away from fuselage while cutting exposed foam tape with knife. Remove sidewall air duct trim.
- (e) Remove tape residue from installation areas using knife and isopropyl alcohol. (Refer to 20-30)

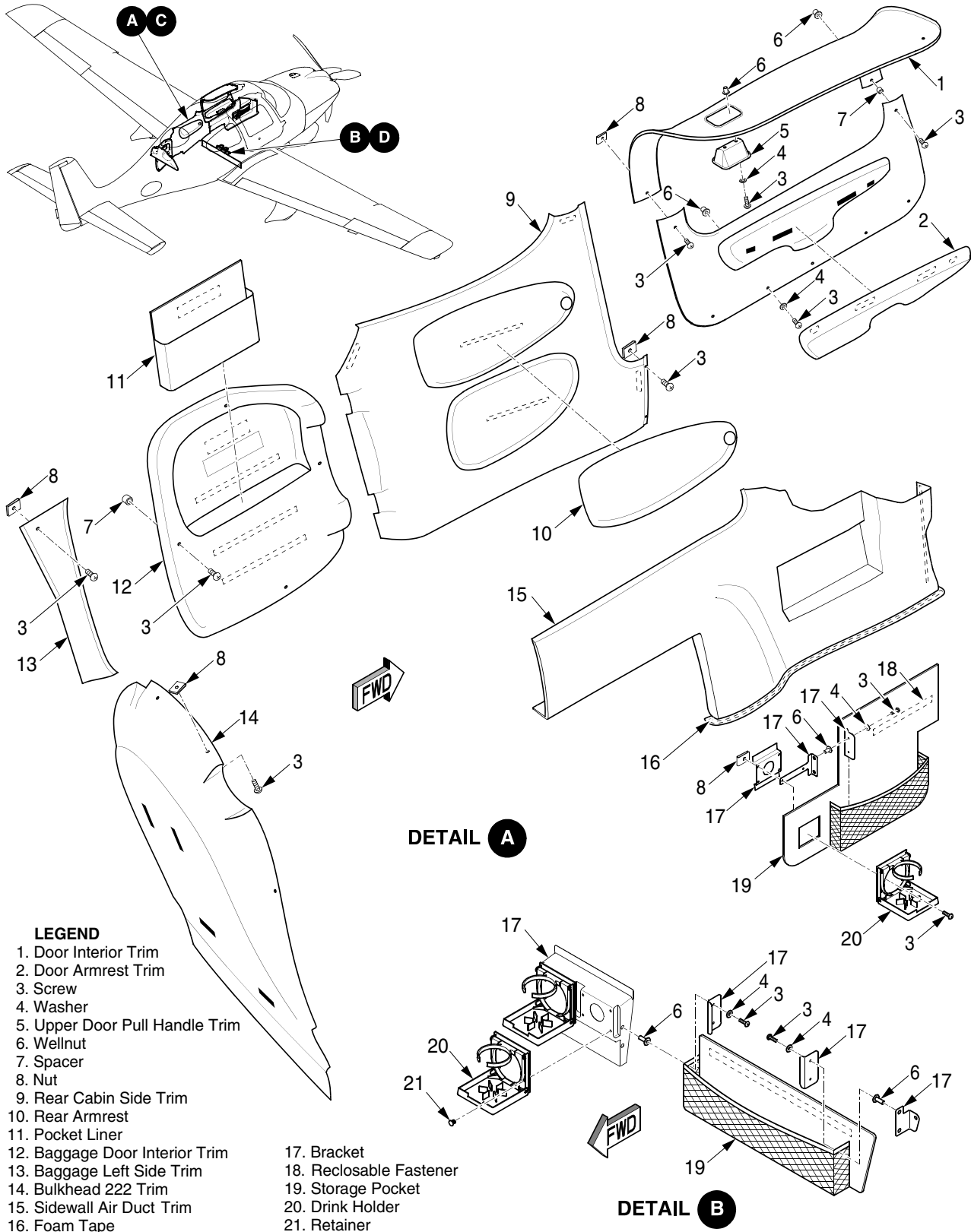
EFFECTIVITY:
All

- (6) Installation - Sidewall Air Duct Trim
 - (a) Acquire necessary tools, equipment, and supplies.

Description	P/N or Spec.	Supplier	Purpose
Foam Tape, 0.062 inch thick × 0.50 inch wide (1.575 mm thick × 12.70 mm wide)	-	Any Source	Secure trim.

- (b) Apply 2-sided tape to backside of sidewall air duct trim at locations in contact with installation areas.
 - (c) Place trim into position and press firmly on trim in areas of foam tape.
 - (d) *Serials 0002 thru 0820:* Install screws securing rear section of sidewall air duct trim to forward section of rear cabin side trim.
 - (e) Install door seal. (Refer to 52-10)
- (7) Removal - Rear Cabin Side Trim
 - (a) Remove screws securing upper section of rear cabin side trim to B-pillar trim.
 - (b) *Serials 0002 thru 0820:* Remove screws securing forward section of rear cabin side trim to sidewall air duct trim.
 - (c) Lift forward edge of trim and release reclosable fasteners. Remove rear cabin side trim.
- (8) Installation - Rear Cabin Side Trim
 - (a) Place trim into position and press firmly on trim in areas of reclosable fasteners.
 - (b) *Serials 0002 thru 0820:* Secure forward section of rear cabin side trim to sidewall air duct trim with screws.
 - (c) Secure upper section of rear cabin side trim to B-pillar trim with screws.
- (9) Removal - Armrest Interior Trim
 - (a) Lift one corner of armrest interior trim, and release reclosable fasteners. Remove armrest interior trim.
- (10) Installation - Armrest Interior Trim
 - (a) Place trim into position and press firmly on trim in areas of reclosable fasteners.
- (11) Removal - Bulkhead 222 Trim
 - (a) Remove screws securing side sections of bulkhead 222 trim to fuselage.
 - (b) Remove screws securing upper section of bulkhead 222 trim to cabin headliner.
 - (c) Lift one corner of trim, and release reclosable fasteners. Remove trim.
- (12) Installation - Bulkhead 222 Trim
 - (a) Place trim into position and press firmly on trim in areas of reclosable fasteners.
 - (b) Secure upper section of bulkhead 222 trim to cabin headliner with screws.
 - (c) Secure side sections of bulkhead 222 trim to fuselage with screws.
- (13) Removal - Drink Holder
 - (a) *Serials 0002 thru 0820:* For forward drink holder, remove screws and nuts securing drink holder to attaching bracket. Remove drink holder.
 - (b) *Serials 0821 & subs:* For forward drink holder, remove snap rivets securing drink holder to sidewall air duct trim. Remove drink holder.
 - (c) For aft drink holder, remove retainers securing drink holder to attaching bracket. Remove drink holder.
- (14) Installation - Drink Holder
 - (a) *Serials 0002 thru 0820:* For forward drink holder, secure drink holder to attaching bracket with screws and nuts.

- (b) *Serials 0821 & subs:* For forward drink holder, secure drink holder to sidewall air duct trim with snap rivets.
- (c) For aft drink holder, secure drink holder to attaching bracket with retainers.
- (15) Removal - Aft Storage Pocket
 - (a) Remove screws, washers, brackets, and wellnuts securing side sections of storage pocket to attaching brackets.
 - (b) Lift one corner of storage pocket, and release reclosable fasteners. Remove storage pocket.
- (16) Installation - Aft Storage Pocket
 - (a) Place storage pocket into position and press firmly on storage pocket in areas of reclosable fasteners.
 - (b) Secure side sections of storage pocket to attaching brackets with screws, washers, brackets, and wellnuts.
- (17) Removal - Forward Storage Pocket
 - (a) *Serials 0002 thru 0820:* Remove drink holder from sidewall air duct trim. (Refer to 25-10)
 - (b) *Serials 0002 thru 0820:* Remove screws, washers, and wellnuts securing storage pocket to attaching brackets.
 - (c) *Serials 0002 thru 0820:* Lift one corner of storage pocket, and release reclosable fasteners. Remove storage pocket.
 - (d) *Serials 0821 & subs:* Remove snap rivets securing storage pocket to sidewall air duct trim. Remove storage pocket.
- (18) Installation - Forward Storage Pocket
 - (a) *Serials 0002 thru 0820:* Place storage pocket into position and press firmly on storage pocket in areas of reclosable fasteners.
 - (b) *Serials 0002 thru 0820:* Secure storage pocket to attaching brackets with screws, washers, and wellnuts.
 - (c) *Serials 0002 thru 0820:* Install drink holder to sidewall air duct trim. (Refer to 25-10)
 - (d) *Serials 0821 & subs:* Install snap rivets securing storage pocket to sidewall air duct trim.



Serials 0002 thru 0820.

SR22_MM25_1897A

Figure 25-108
Mid and Aft Trim - Serials 0002 thru 0820 (Sheet 1 of 2)

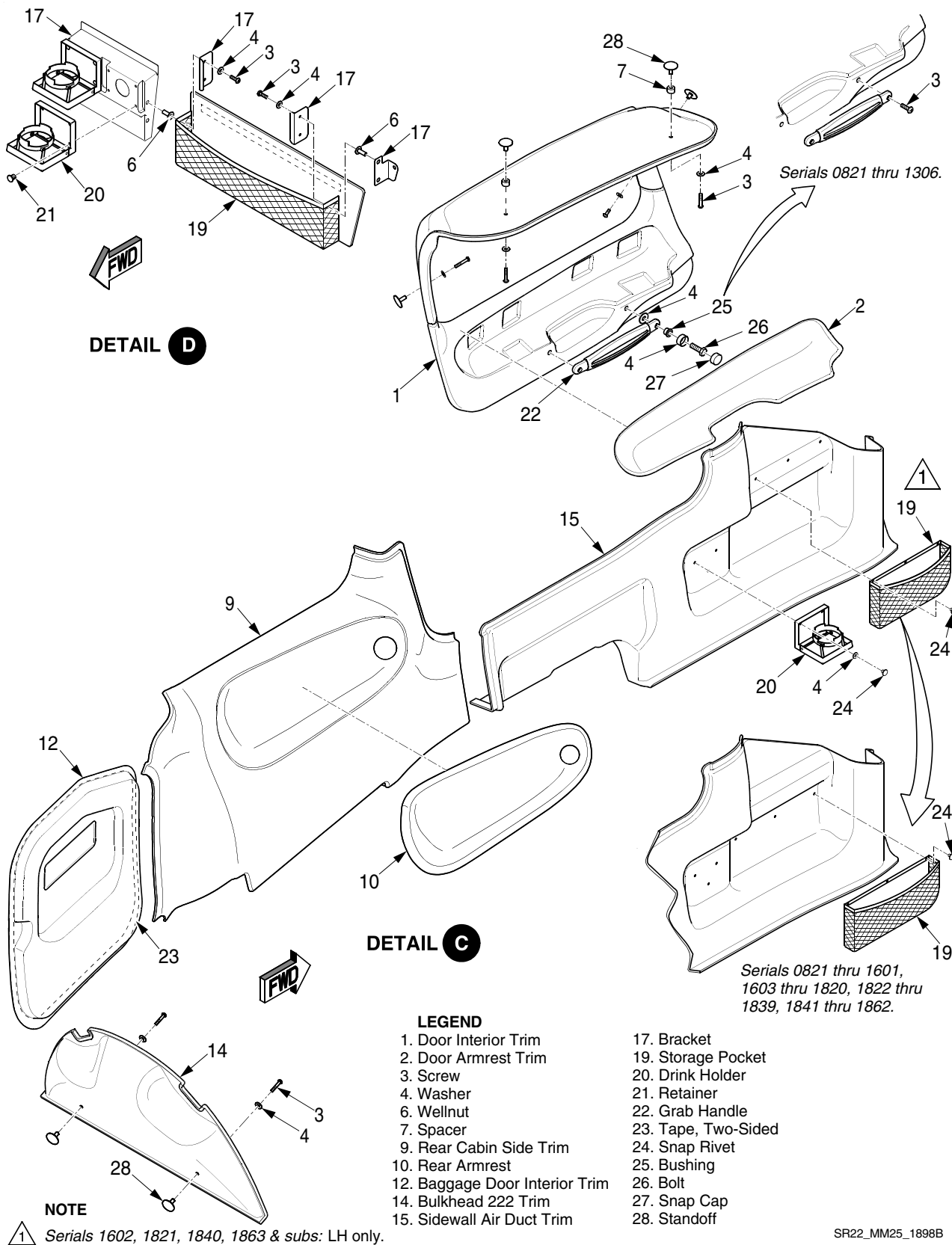


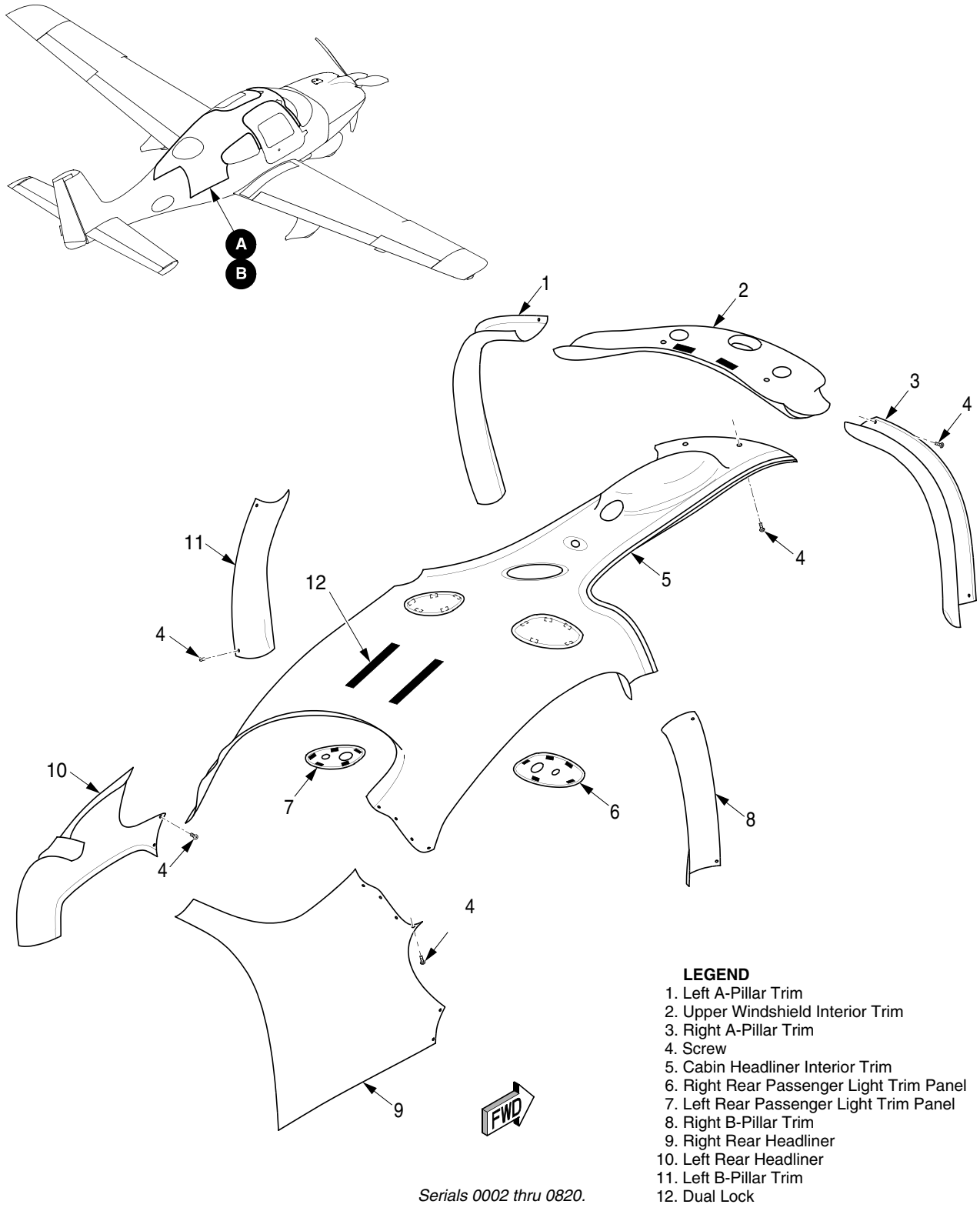
Figure 25-108
Mid and Aft Trim - Serials 0821 & subs (Sheet 2 of 2)

EFFECTIVITY:
 Serials 0821 & subs

K. Headliner Trim (See Figure 25-109)

- (1) Removal - Cabin Headliner
 - (a) Remove door seal. (Refer to 52-10)
 - (b) Remove A-pillar trim. (Refer to 25-10)
 - (c) Remove B-pillar trim. (Refer to 25-10)
 - (d) Remove grab handle screws and loosen sunvisor screws. (Refer to 25-10)
 - (e) Remove grill from speaker.
 - (f) Remove screws securing speaker to headliner and disconnect speaker wires.
 - (g) Remove compass. (Refer to 34-20)
 - (h) Remove rear passenger light access panel and disconnect wires to switch and light.
 - (i) Remove upper windshield interior trim. (Refer to 25-10)
 - (j) Remove bulkhead 222 trim. (Refer to 25-10)
 - (k) Remove rear headliner trim. (Refer to 25-10)
 - (l) Lift corners of cabin headliner and release reclosable fasteners. Remove headliner.
- (2) Installation - Cabin Headliner
 - (a) Place cabin headliner into position and secure. Press firmly on trim in areas of reclosable fasteners.
 - (b) Install rear headliner trim. (Refer to 25-10)
 - (c) Install bulkhead 222 trim. (Refer to 25-10)
 - (d) Install upper windshield interior trim. (Refer to 25-10)
 - (e) Connect wires to rear passenger light access panel switch and light. Secure rear passenger light access panel.
 - (f) Install compass. (Refer to 34-20)
 - (g) Connect speaker wires and secure with screws.
 - (h) Install and secure speaker grill.
 - (i) Secure grab handles with screws and tighten sunvisor screws. (Refer to 25-10)
 - (j) Install B-pillar trim. (Refer to 25-10)
 - (k) Install A-pillar trim. (Refer to 25-10)
 - (l) Install door seal. (Refer to 52-10)
- (3) Removal - Rear Headliner Trim
 - (a) Remove screws securing upper section of rear headliner trim to cabin headliner trim.
 - (b) Remove screws securing lower section of rear headliner trim to rear cabin side trim.
 - (c) Lift corners of rear headliner trim and release reclosable fasteners. Remove rear headliner trim.
- (4) Installation - Rear Headliner Trim
 - (a) Place rear headliner trim into position and secure upper section of trim with screws to cabin headliner trim.
 - (b) Secure lower section of trim with screws to rear cabin side trim.
 - (c) Press firmly on trim in areas of reclosable fasteners.
- (5) Removal - Upper Windshield Trim
 - (a) Remove compass. (Refer to 34-20)
 - (b) Remove A-pillar trim. (Refer to 25-10)
 - (c) Lift corners of upper windshield trim and release reclosable fasteners.
 - (d) Disconnect wires to switches and lights. Remove upper windshield trim.
- (6) Installation - Upper Windshield Trim
 - (a) Connect wires to switches, compass, and lights in upper windshield trim.
 - (b) Place upper windshield trim into position and secure. Press firmly on trim in areas of reclosable fasteners.

- (c) Install A-pillar trim. (Refer to 25-10)
- (d) Install compass. (Refer to 34-20)
- (7) Removal - A-Pillar Trim
 - (a) Remove sunvisor blade. (Refer to 25-10)
 - (b) Remove screws securing A-pillar trim to upper windshield trim and lower windshield trim.
 - (c) Lift corners of trim and release reclosable fasteners. Remove trim.
- (8) Installation - A-Pillar Trim
 - (a) Place A-pillar trim into position and press firmly on trim in areas of reclosable fasteners.
 - (b) Secure upper section of A-pillar trim with screws to upper windshield trim.
 - (c) Secure lower section of A-pillar trim with screws to lower windshield trim.
 - (d) Install sunvisor blade. (Refer to 25-10)
- (9) Removal - B-Pillar Trim
 - (a) Remove screws securing B-pillar trim to cabin headliner and rear cabin side trim.
 - (b) Lift corners of trim and release reclosable fasteners. Remove trim.
- (10) Installation - B-pillar Trim
 - (a) Place B-pillar trim into position and press firmly on trim in areas of reclosable fasteners.
 - (b) Secure upper section of B-pillar trim with screws to cabin headliner.
 - (c) Secure lower section of B-pillar trim with screws to rear cabin side trim.
 - (d) Press firmly on trim in areas of reclosable fasteners.
- (11) Removal - Rear Passenger Light Trim Panel - *Serials 0002 thru 0820*
 - (a) Lift corner of panel and release reclosable fasteners. Remove panel.
- (12) Installation - Rear Passenger Light Trim Panel - *Serials 0002 thru 0820*
 - (a) Place panel into position and press firmly on trim in areas of reclosable fasteners.
- (13) Removal - Coat Hook - *Serials 1520 & subs*
 - (a) Remove screw securing coat hook to cabin headliner trim.
- (14) Installation - Coat Hook - *Serials 1520 & subs*
 - (a) Position coat hook to cabin headliner trim and secure with screw.

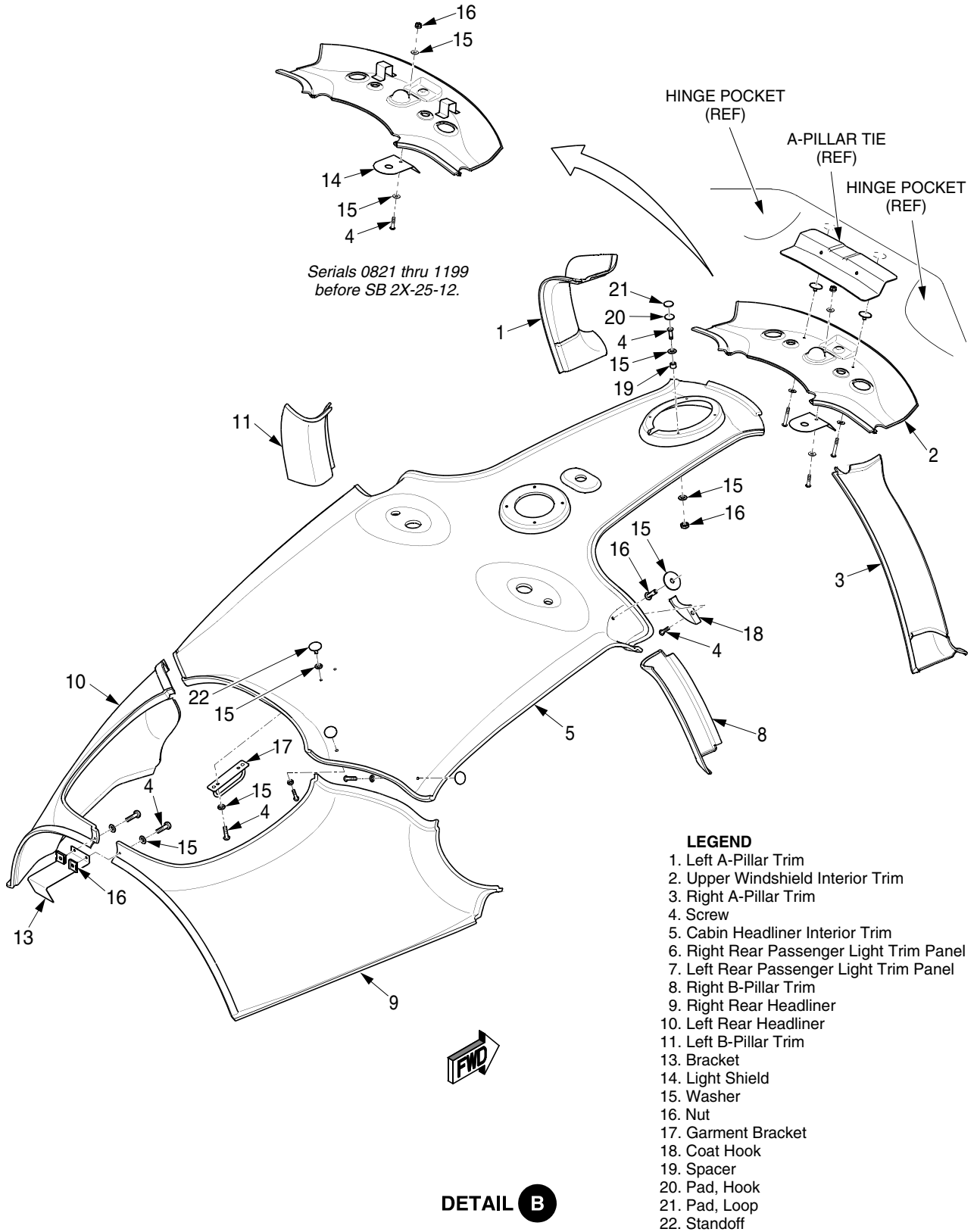


DETAIL A

SR22_MM25_1894A

Figure 25-109
Headliner Trim - Serials 0002 thru 0820 (Sheet 1 of 2)

EFFECTIVITY:
 Serials 0002 thru 0820



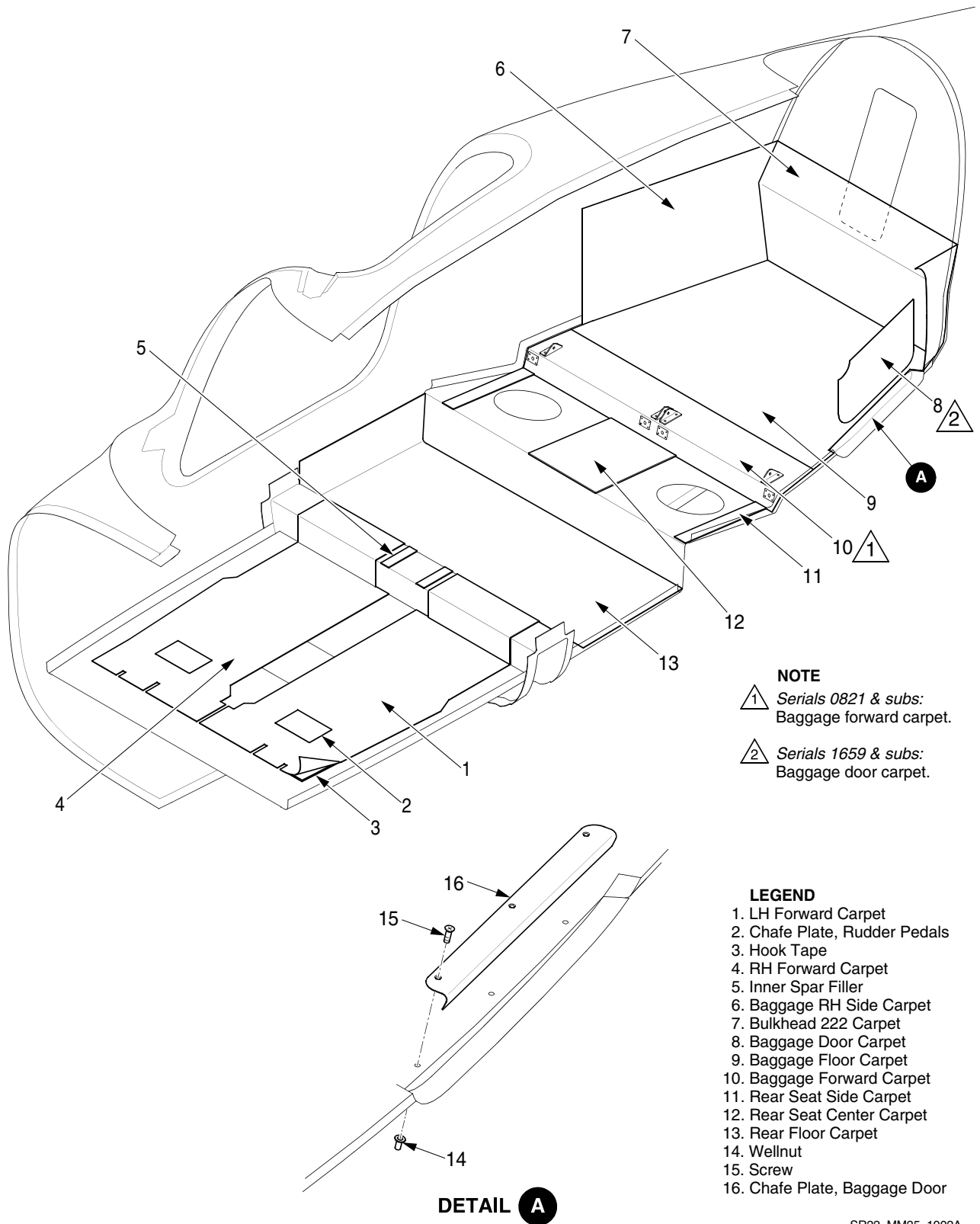
SR22_MM25_1895A

Figure 25-109
Headliner Trim - Serials 0821 & subs (Sheet 2 of 2)

EFFECTIVITY:
Serials 0821 & subs

L. Floor Covering (See Figure 25-1010)

- (1) Removal - Floor Covering
 - (a) Lift corner of carpet and pull carpet from floor to release reclosable fasteners.
- (2) Installation - Floor Covering
 - (a) Clean floor surface and reclosable fasteners using a whisk broom and a vacuum cleaner.
 - (b) Place carpet into position and press firmly on carpet in areas of reclosable fasteners.



NOTE

1 Serials 0821 & subs:
Baggage forward carpet.

2 Serials 1659 & subs:
Baggage door carpet.

- LEGEND**
- 1. LH Forward Carpet
 - 2. Chafe Plate, Rudder Pedals
 - 3. Hook Tape
 - 4. RH Forward Carpet
 - 5. Inner Spar Filler
 - 6. Baggage RH Side Carpet
 - 7. Bulkhead 222 Carpet
 - 8. Baggage Door Carpet
 - 9. Baggage Floor Carpet
 - 10. Baggage Forward Carpet
 - 11. Rear Seat Side Carpet
 - 12. Rear Seat Center Carpet
 - 13. Rear Floor Carpet
 - 14. Wellnut
 - 15. Screw
 - 16. Chafe Plate, Baggage Door

SR22_MM25_1902A

Figure 25-1010
Floor Covering

EFFECTIVITY:
All

M. Sunvisor Blade (See Figure 25-1011)

- (1) Removal - Sunvisor Blade
 - (a) *Serials 0002 thru 0168:* To avoid damaging the blade, do not slide the sunvisor blade off the sunvisor arm. Blade, mounting clamp, and arm must be removed as assembly. Perform Removal - Sunvisor Mounting Clamp and Arm. ([Refer to 25-10](#))
 - (b) *Serials 0169 & subs w/ standard sunvisor:* Remove sunvisor blade by rotating blade and pulling away from sunvisor arm.
 - (c) *Serials 1150 & subs w/ optional Rosen sunvisor:* Remove screw and washer securing sunvisor blade to mount assembly.
- (2) Installation - Sunvisor Blade
 - (a) *Serials 0002 thru 0168:* To avoid damaging the blade, do not slide the sunvisor blade on the sunvisor arm. Blade, mounting clamp, and arm must be installed as assembly. Perform Installation - Sunvisor Mounting Clamp and Arm. ([Refer to 25-10](#))
 - (b) *Serials 0169 & subs w/ standard sunvisor:* Slide sunvisor blade clamp onto sunvisor arm.
 - (c) *Serials 1150 & subs w/ optional Rosen sunvisor:* Position sunvisor blade to mount assembly and secure with screw and washer.

N. Sunvisor Mounting Clamp and Arm (See Figure 25-1011)

- (1) Removal - Sunvisor Mounting Clamp and Arm
 - (a) *Serials 0002 thru 0168*: Remove screws, felt isolators, washers, and nuts securing sunvisor to clamp.
 - (b) *Serials 0169 & subs w/ standard sunvisor*: Remove screws, spacer, felt isolators, washers, and nuts securing sunvisor to clamp.
 - (c) Remove A-pillar trim. (Refer to 25-10)
 - (d) *Serials 0002 thru 0168, 0169 & subs w/ standard sunvisor*: Remove screws securing sunvisor arm to fuselage.
 - (e) *Serials 1150 & subs w/ optional Rosen sunvisor*: Remove screws securing sunvisor mount assembly to fuselage.
- (2) Installation - Sunvisor Mounting Clamp and Arm
 - (a) *Serials 0002 thru 0168, 0169 & subs w/ standard sunvisor*: Position sunvisor arm to fuselage and secure with screws.
 - (b) *Serials 1150 & subs w/ optional Rosen sunvisor*: Position sunvisor mount assembly to fuselage and secure with screws.
 - (c) Install A-pillar trim. (Refer to 25-10)
 - (d) *Serials 0002 thru 0168, 0169 & subs w/ standard sunvisor*: Position clamp on sunvisor arm.
 - (e) *Serials 0002 thru 0168*: Position sunvisor to clamp and secure with screws, felt isolators, washers, and nuts.
 - (f) *Serials 0169 & subs w/ standard sunvisor*: Position sunvisor to clamp and secure with screws, spacer, felt isolators, washers, and nuts.

O. Grab Handle (See Figure 25-1011)

- (1) Removal - Grab Handle
 - (a) Remove A-pillar trim. (Refer to 25-10)
 - (b) *Serials 0002 thru 0820*: Remove screws and spacers securing grab handle to fuselage.
 - (c) *Serials 0821 thru 0934*:
 - 1 Remove screws and spacers securing outboard end of grab handle to fuselage.
 - 2 Remove screws securing inboard end of grab handle to fuselage.
 - (d) *Serials 0935 thru 1519, 1520 & subs w/o optional headset hook*: Remove screws securing grab handle to fuselage.
 - (e) *Serials 1520 & subs w/ optional headset hook*:
 - 1 Remove headset hook. (Refer to 25-10)
 - 2 Remove screw securing inboard end of grab handle to fuselage.
 - 3 Remove screws securing outboard end of grab handle to fuselage.
- (2) Installation - Grab Handle
 - (a) *Serials 0002 thru 0820*: Position grab handle to fuselage and secure with screws and spacers.
 - (b) *Serials 0821 thru 0934*:
 - 1 Position outboard end of grab handle to fuselage and secure with screws and spacers.
 - 2 Position inboard end of grab handle to fuselage and secure with screws.
 - (c) *Serials 0935 thru 1519, 1520 & subs w/o optional headset hook*: Position grab handle to fuselage and secure with screws.
 - (d) *Serials 1520 & subs w/ optional headset hook*:
 - 1 Position outboard end of grab handle to fuselage and secure with screws.
 - 2 Position inboard end of grab handle to fuselage and secure with screw.
 - 3 Install headset hook. (Refer to 25-10)
 - (e) Install A-pillar trim. (Refer to 25-10)

P. Headset Hook - *Serials 1520 & subs* (See Figure 25-1011)

- (1) Removal - Headset Hook
 - (a) Remove screw securing headset hook to grab handle.
- (2) Installation - Headset Hook
 - (a) Position headset hook to grab handle and secure with screw.

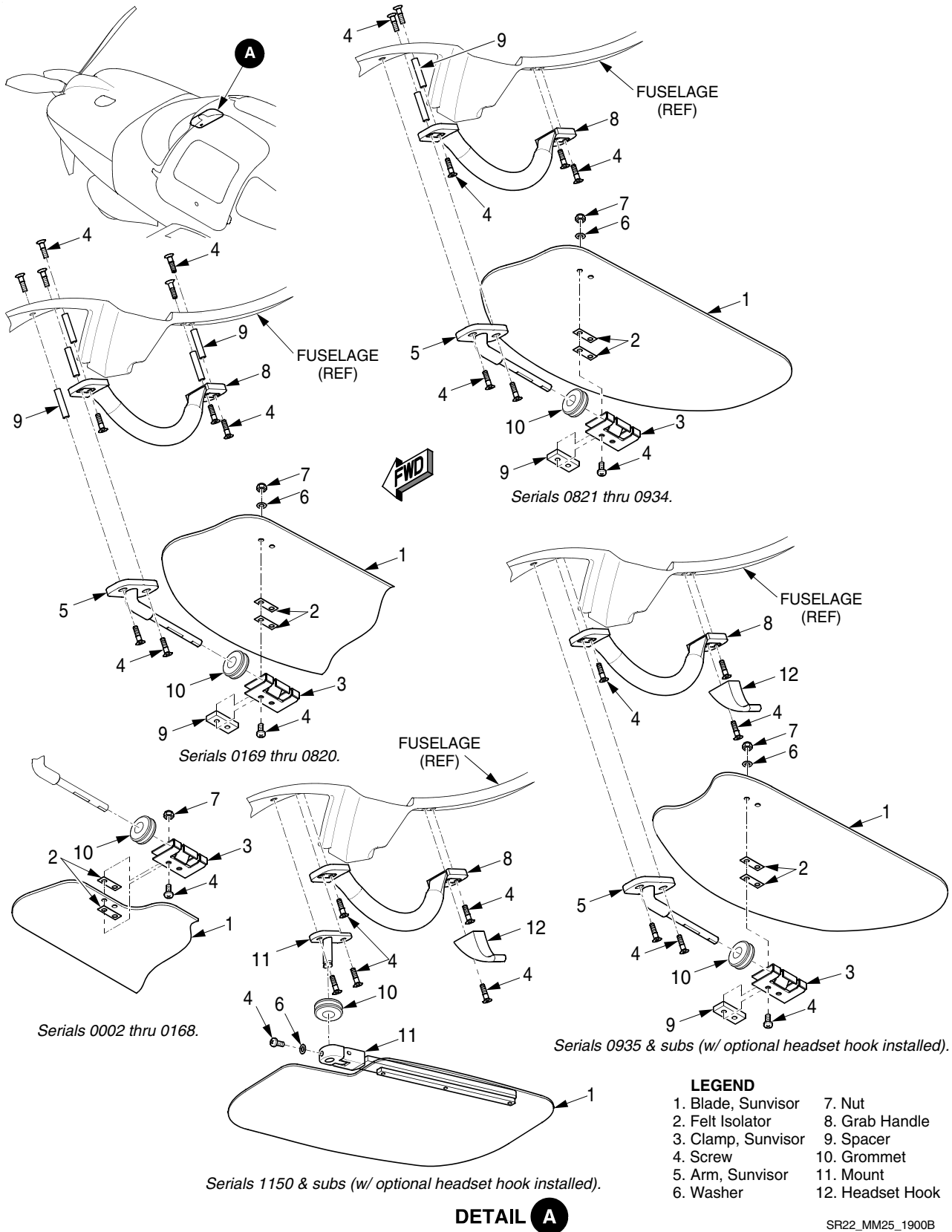
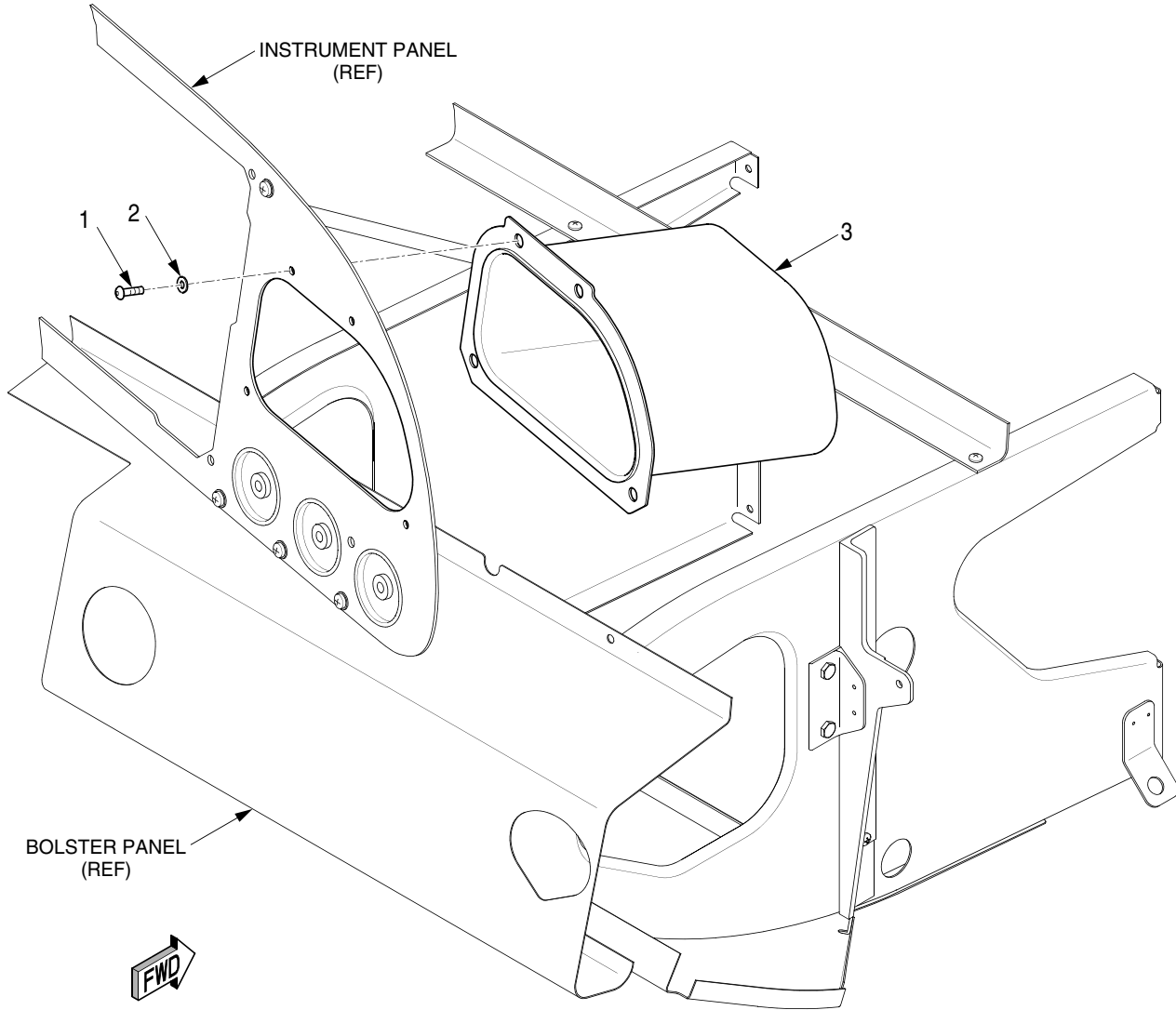
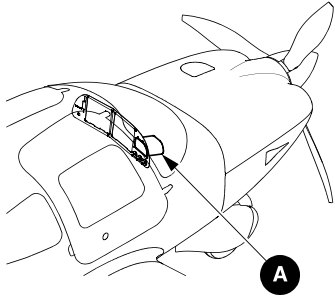


Figure 25-1011
Sunvisor and Grab Handle Assembly

Q. Glove Box - Serials 1602, 1644, 1663 & subs (See Figure 25-1012)

- (1) Removal - Glove Box
 - (a) Set BAT 1, BAT 2, and AVIONICS switches to OFF positions.
 - (b) Remove glareshield. ([Refer to 25-10](#))
 - (c) Remove screws and washers securing glove box to instrument panel.
- (2) Installation - Glove Box
 - (a) Position glove box to instrument panel and secure with screws and washers.
 - (b) Install glareshield. ([Refer to 25-10](#))



- LEGEND**
- 1. Screw
 - 2. Washer
 - 3. Glove Box

DETAIL A

SR22_MM25_2587

Figure 25-1012
Glove Box Installation - Serials 1602, 1644, 1663 & subs

EFFECTIVITY:
Serials 1602, 1644, 1663 & subs

R. Radio Module Assembly (See Figure 25-1013) (See Figure 25-1014) (See Figure 25-1015)

- (1) Removal - Radio Module Assembly
 - (a) Set BAT 1, BAT 2, and AVIONICS switches to OFF positions.
 - (b) Pull STARTER RELAY, FUEL PUMP RELAY, ESSENTIAL, and NON-ESSENTIAL AVIONICS circuit breakers.
 - (c) Remove LH, RH, and center bolster trim. (Refer to 25-10)
 - (d) Loosen screws securing bolster plate to LH bolster panel. (Refer to 31-10)
 - (e) Remove LH mid-console circuit breaker trim. (Refer to 25-10)
 - (f) Remove RH mid-console trim. (Refer to 25-10)
 - (g) Remove cabin floor access panel CF8. (Refer to 06-00)
 - (h) Remove glareshield. (Refer to 25-10)
 - (i) Remove MFD. (Refer to 31-60)

Note: Label avionics and communication units to ensure proper reinstallation. Failure to install avionics and communication units as originally configured will require calibration and setup procedures to be performed.

- (j) Remove GPS 1. (Refer to 34-50)
- (k) Remove GPS 2, if installed. (Refer to 34-50)
- (l) Remove GTX Transponder. (Refer to 34-50)
- (m) Remove System 55 Autopilot, if installed. (Refer to 22-11)
- (n) Remove audio panel. (Refer to 23-50)
- (o) Disconnect J521 connector from audio wire harness.
- (p) Disconnect P566 connector from Flight Director wire harness, if installed.
- (q) Disconnect J550 connector from autopilot wire harness, if installed.
- (r) Disconnect P517 connector from NAV/PFD wire harness.
- (s) Disconnect P518 connector from NAV/PFD wire harness.
- (t) Remove screws securing TR522, TR523, TR524, TR525, and TR526 terminal rings from radio module assembly.
- (u) Disconnect J546 connector from Sandel HSI, if installed.
- (v) Disconnect P554 connector from autopilot wire harness, if installed.
- (w) Disconnect J556 connector from SKYWATCH wire harness, if installed.
- (x) Disconnect GPS 1 antenna cable from radio module assembly.
- (y) Disconnect COM 1 antenna cable from radio module assembly.
- (z) *Serials 0002 thru 0333:* Disconnect transponder antenna cable.
 - 1 At access panel CF8, reach through forward longeron and disconnect J509 connector from transponder antenna.
 - 2 Cut cable ties securing transponder antenna cable to other cables.

CAUTION: Use caution while removing transponder antenna cable to prevent damaging other wire harnesses and cables.

- 3 Pull cable through forward longeron, access panel CF8, and over wire loom.
- (aa) *Serials 0334 & subs:* Disconnect transponder antenna cable J506 connector from transponder.
- (ab) Disconnect J520 connector from radio module assembly.
- (ac) Remove screws and washers securing front of radio module assembly to bolster panel.
- (ad) Remove screws and washers securing sides of radio module assembly to center console.

CAUTION: Use caution while pulling radio module assembly out to prevent damaging wire harnesses and electrical connectors.

- (ae) Carefully slide radio module assembly out of center console.
- (af) Disconnect P508 connector from altitude encoder.
- (ag) Disconnect P533 connector from marker beacon antenna cable.
- (ah) Disconnect GPS 2 antenna cable from radio module assembly, if installed.
- (ai) Disconnect COM 2 antenna cable from radio module assembly, if installed.
- (aj) Disconnect VOR/LOC cable from antenna diplexer.
- (ak) Remove radio module assembly from airplane.
- (2) Disassembly - Radio Module Assembly
 - (a) Remove screws securing cooling fan and spacer to radio module assembly.
 - (b) Disconnect cooling hoses from fan plate bushings.
 - (c) Remove fan plate and bushings from radio module assembly.
- (3) Reassembly - Radio Module Assembly
 - (a) Position fan plate to radio module assembly.
 - (b) Insert bushings through installation holes in fan plate and radio module assembly.
 - (c) Connect cooling hoses to fan plate bushings.
 - (d) Position spacer and cooling fan to radio module assembly and secure with screws.
- (4) Installation - Radio Module Assembly

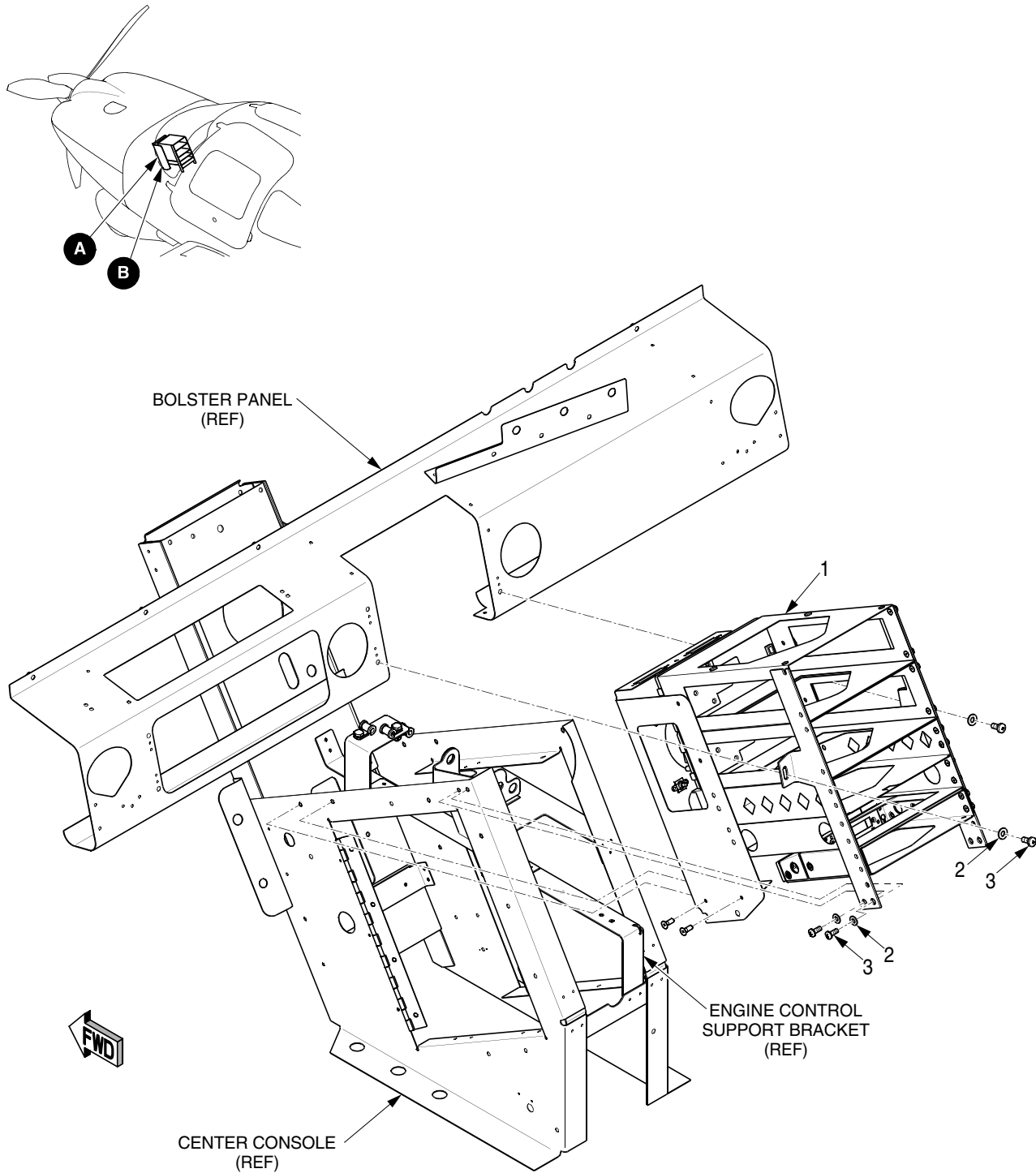
Note: To facilitate installation of VOR/LOC cable it may be necessary to loosen the diplexer. (Refer to 34-50)

- (a) Connect VOR/LOC cable to diplexer.
- (b) Connect GPS 2 antenna cable to radio module assembly, if installed.
- (c) Connect COM 2 antenna cable to radio module assembly, if installed.
- (d) Connect P533 connector to marker beacon antenna cable.
- (e) Connect P508 connector to altitude encoder.
- (f) Carefully slide radio module assembly into center console.
- (g) Connect J520 connector to radio module assembly.
- (h) *Serials 0002 thru 0333:* Connect transponder antenna cable.

WARNING: Verify transponder antenna cable does not interfere with any flight controls or lines.

- 1 Route transponder antenna cable over wire loom, through access panel CF8, and through forward longeron.
- 2 Connect J509 connector to transponder antenna.
- 3 Install cable ties securing transponder antenna cable to adjacent wire harnesses and cables.
 - (i) *Serials 0334 & subs:* Connect transponder antenna cable J506 connector to transponder.
 - (j) Connect GPS 1 antenna cable to radio module assembly.
 - (k) Connect COM 1 antenna cable to radio module assembly.
 - (l) Install screws securing TR522, TR523, TR524, TR525, and TR526 terminal rings to radio module assembly.
 - (m) Connect P518 connector to NAV/PFD wire harness.
 - (n) Connect P517 connector to NAV/PFD wire harness.
 - (o) Connect J550 connector to autopilot wire harness.

- (p) Connect P566 connector to Flight Director wire harness, if installed.
- (q) Connect J521 connector to audio wire harness.
- (r) Connect J546 connector to Sandel HSI, if installed.
- (s) Connect P554 connector to autopilot wire harness, if installed.
- (t) Connect J556 connector to SKYWATCH wire harness, if installed.
- (u) Install screws and washers securing sides of radio module assembly to center console.
- (v) Install screws and washers securing front of radio module assembly to bolster panel.
- (w) Install GPS 1. ([Refer to 34-50](#))
- (x) Install GPS 2, if installed. ([Refer to 34-50](#))
- (y) Install GTX Transponder. ([Refer to 34-50](#))
- (z) Install System 55 Autopilot. ([Refer to 22-11](#))
- (aa) Install audio panel. ([Refer to 23-50](#))
- (ab) Install MFD. ([Refer to 31-60](#))
- (ac) Install glareshield. ([Refer to 25-10](#))
- (ad) Install cabin floor access panel CF8. ([Refer to 06-00](#))
- (ae) Tighten screws securing bolster plate to LH bolster panel. ([Refer to 31-10](#))
- (af) Install RH mid-console trim. ([Refer to 25-10](#))
- (ag) Install LH mid-console circuit breaker trim. ([Refer to 25-10](#))
- (ah) Install LH, RH, and center bolster trim. ([Refer to 25-10](#))
- (ai) Reset STARTER RELAY, FUEL PUMP RELAY, ESSENTIAL, and NON-ESSENTIAL AVI-ONICS circuit breakers.



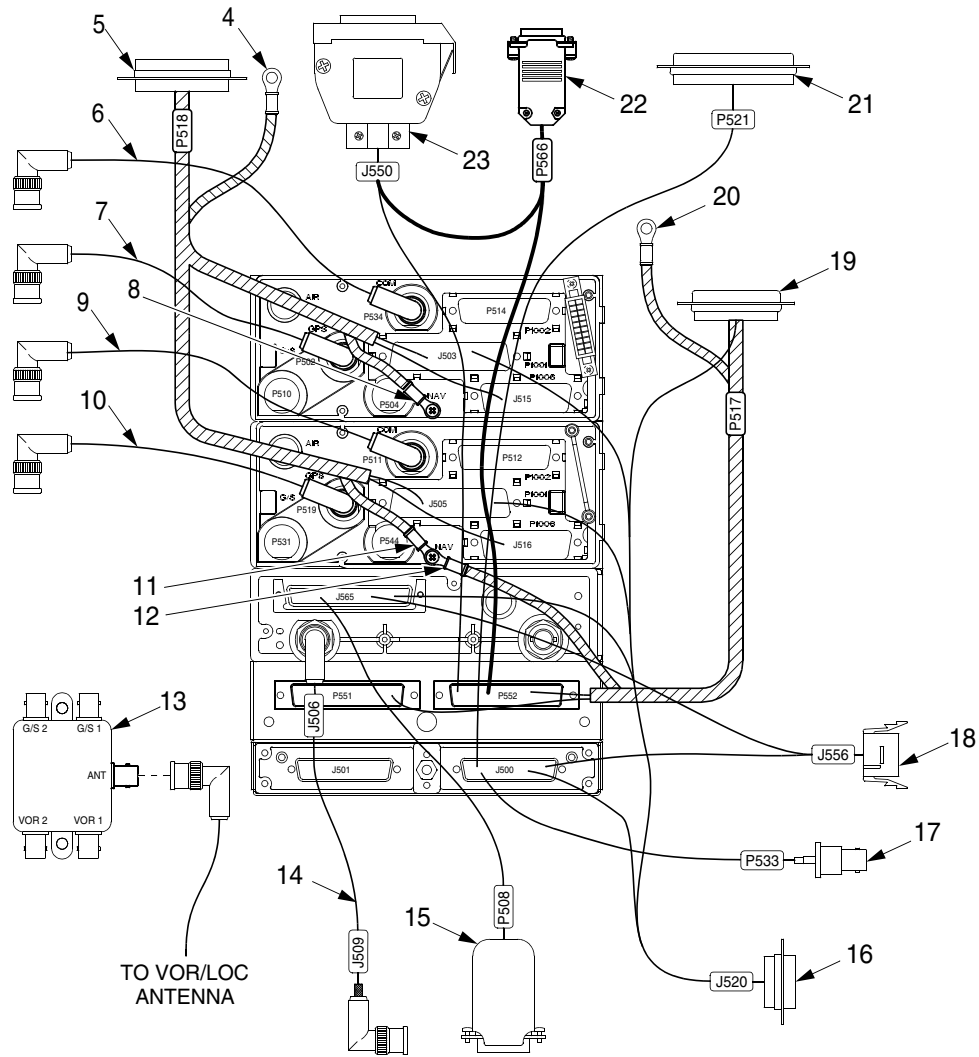
- LEGEND**
- 1. Radio Module Assembly
 - 2. Screw
 - 3. Washer

DETAIL A

SR22_MM25_2075

Figure 25-1013
Radio Module Assembly Installation

EFFECTIVITY: All

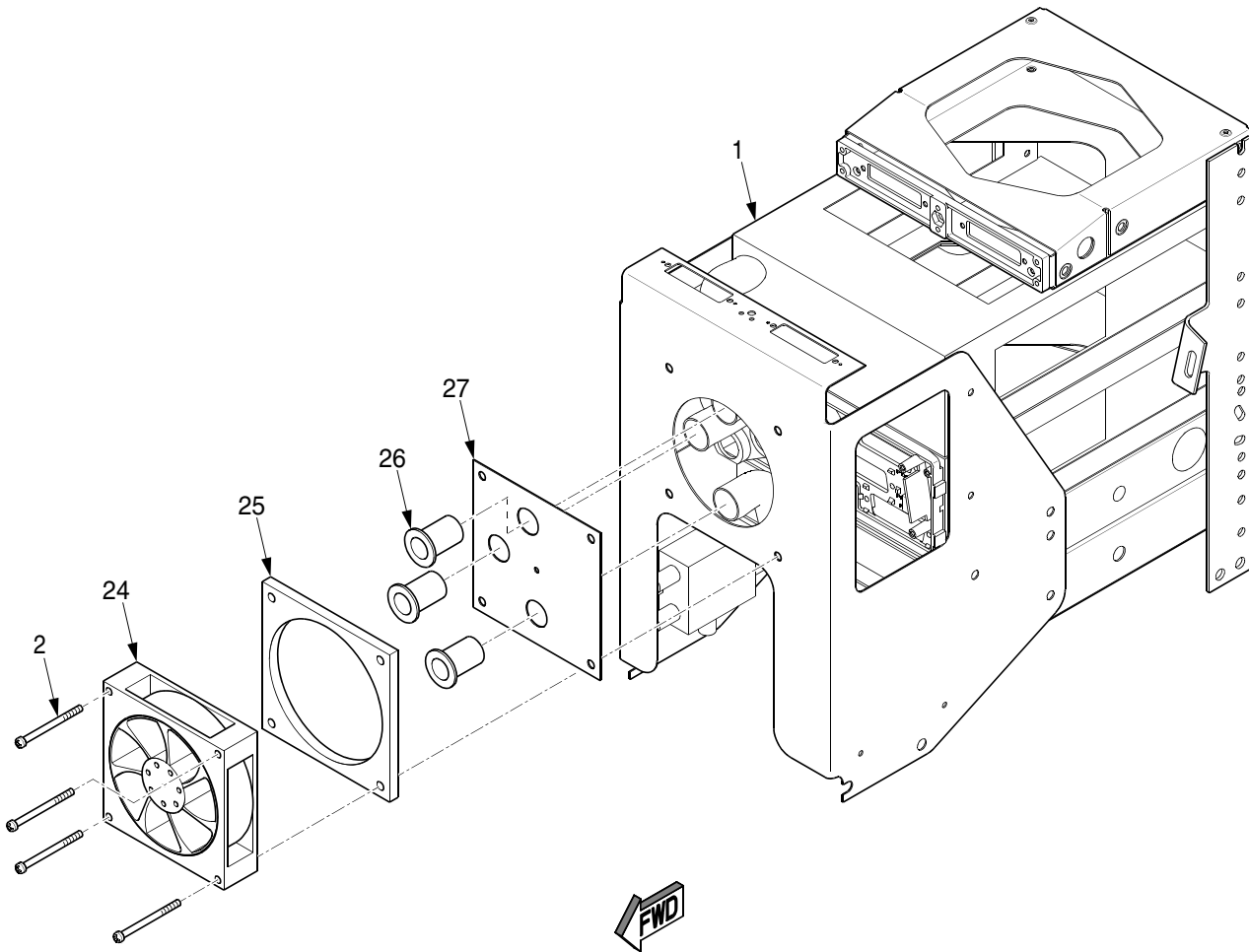


- LEGEND**
- 4. TR522
 - 5. P518, NAV/PFD
 - 6. COM 1 Antenna Cable
 - 7. GPS 1 Antenna Cable
 - 8. TR526
 - 9. COM 2 Antenna Cable
 - 10. GPS 2 Antenna Cable
 - 11. TR525
 - 12. TR524
 - 13. Antenna Diplexer
 - 14. Transponder Antenna Cable
 - 15. P508, Altitude Encoder
 - 16. J520, Radio Module Assembly
 - 17. P533, Marker Beacon Antenna Cable
 - 18. J556, Skywatch
 - 19. P517, NAV/PFD
 - 20. TR523
 - 21. P521, Audio
 - 22. P566, Flight Director
 - 23. J550, Autopilot

SR22_MM25_2076

Figure 25-1014
Radio Module Wiring

EFFECTIVITY:
All



- LEGEND**
- 1. Radio Module Assembly
 - 2. Screw
 - 24. Cooling Fan
 - 25. Spacer
 - 26. Bushing
 - 27. Fan Plate

DETAIL B

SR22_MM25_2090

Figure 25-1015
Radio Module Disassembly

EFFECTIVITY:
All